



PARTS CATALOG

Published

2009/5 (May.)

0CNP4-G98100

CONTENTS

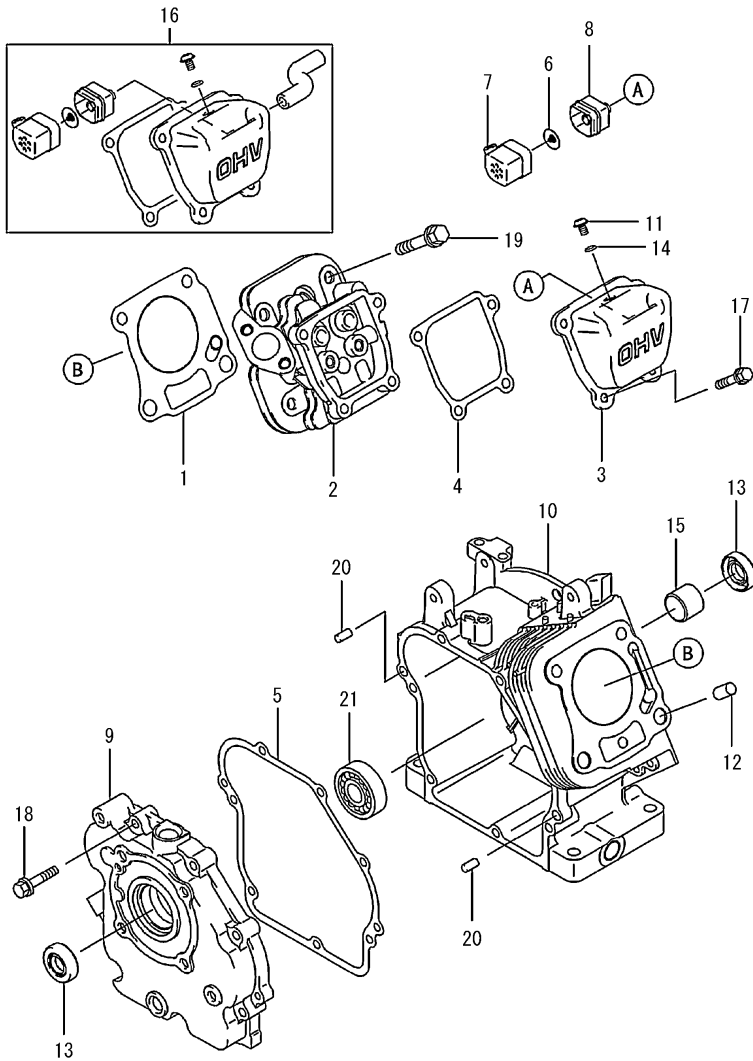
MODEL : FJ100D-AB50
PC NO : 0CNP5-G00500

Fig.No. GROUP NAME
ENGINE SECTION

1. CYLINDER/CRANKCASE
2. PISTON/CRANKSHAFT
3. VALVE/CAMSHAFT
4. LUBRICATION-EQUIPMENT
5. COOLING-EQUIPMENT
6. ELECTRIC-EQUIPMENT
7. CONTROL-EQUIPMENT
8. CARBURETOR
9. AIR-FILTER/MUFFLER
10. FUEL-TANK/FUEL-VALVE
11. STARTER

Fig.No. GROUP NAME

Fig.1. CYLINDER/CRANKCASE



0CNP5-G00500 1. CYLINDER/CRANKCASE

(A)=FJ100D-AB50

(B)=

(C)=

(D)=

(E)=

(F)=

REF.	LEV.	PARTS NO.	DESCRIPTION	Q'TY						I	R
				(A)	(B)	(C)	(D)	(E)	(F)		
1	1	1Z1100-42143	GASKET-HEAD	1							
2	1	1Z1100-82165	HEAD-COMP-CYLINDER	1							
3	1	1Z1102-22080	CASE-ROCKER	1							
4	1	1Z1106-12100	GASKET,CASE-ROCKER	1							
5	1	1Z1106-12104	GASKET,COVER-CRANKCA	1							
6	1	1Z1612-62051	VALVE	1							
7	1	1Z3209-92402	CASE	1							
8	1	1Z3209-92403	CASE	1							
9	1	1Z4901-56270	COVER-CRANKCASE	1							
10	1	1Z4912-06170	CRANKCASE-COMP	1							
11	1	1Z9200-92322	SCREW	1							
12	1	1Z9204-31037	PIN	2							
13	1	1Z9204-92261	SEAL-OIL, 20X35X8AE	2							
14	1	1Z9205-51343	RING-O	1							
15	1	1Z9214-12120	BEARING-PLANE	1							
16	1	1Z9991-62175	KIT-KHI PARTS,CASE	1							
17	1	1Z130A-A0612	BOLT-FLANGED,6X12	4							
18	1	1Z130B-A0630	BOLT-FLANGED,6X30	7							
19	1	1Z130C-A0840	BOLT-FLANGED,8X40	4							
20	1	1Z0056-06120	PIN,DOWEL	2							
21	1	24101-060044	BALL BEARING #6004	1							

Fig.2. PISTON/CRANKSHAFT

0CNP5-G00500 2. PISTON/CRANKSHAFT

(A)=FJ100D-AB50

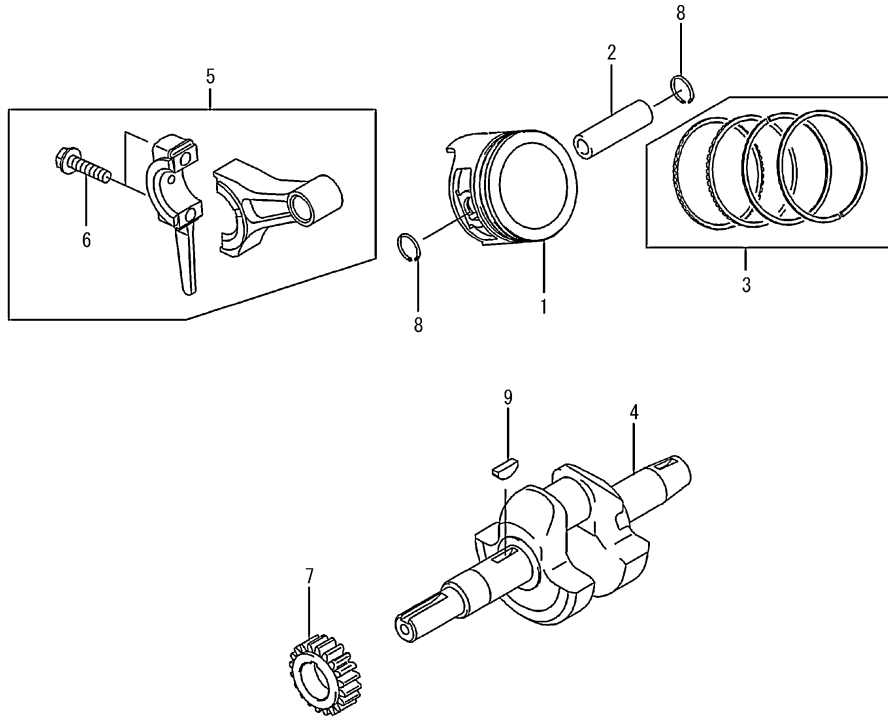
(B)=

(C)=

(D)=

(E)=

(F)=



REF.	LEV.	PARTS NO.	DESCRIPTION	QTY						I	R
				(A)	(B)	(C)	(D)	(E)	(F)		
1	1	1Z1300-12155	PISTON-ENGINE	1							
2	1	1Z1300-22083	PIN-PISTON	1							
3	1	1Z1300-82061	RING-SET-PISTON	1							
4	1	1Z1303-72581	CRANKSHAFT	1							
5	1	1Z1325-12068	ROD-ASSY-CONNECTING	1							
6	2	1Z130B-A0625	BOLT-FLANGED,6X25	2							
7	1	1Z5905-12375	GEAR-SPUR	1							
8	1	1Z9203-32051	SNAP RING	2							
9	1	1Z9203-80030	KEY	1							

Fig.3. VALVE/CAMSHAFT

(A)=FJ100D-AB50

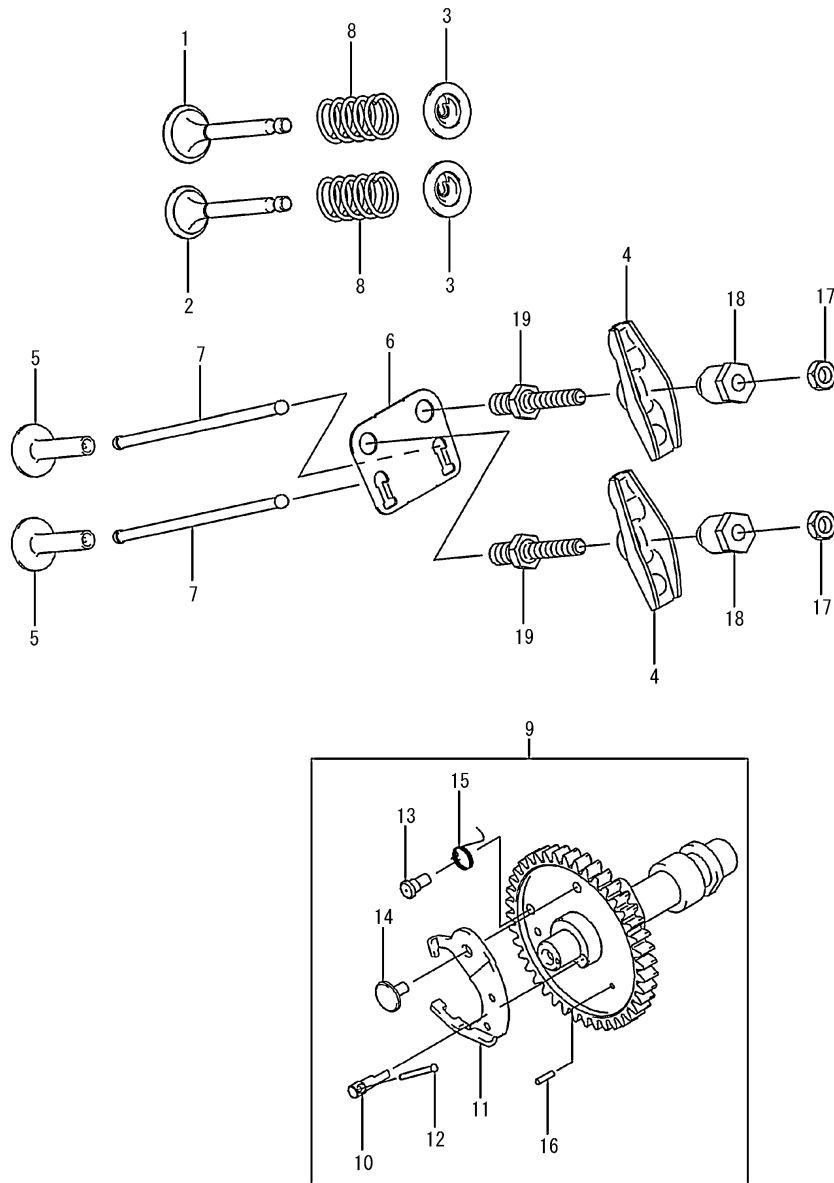
(B)=

(C)=

(D)=

(E)=

(F)=



REF.	LEV.	PARTS NO.	DESCRIPTION	Q'TY						I	R
				(A)	(B)	(C)	(D)	(E)	(F)		
1	1	1Z1200-42118	VALVE-INTAKE	1							
2	1	1Z1200-52104	VALVE-EXHAUST	1							
3	1	1Z1200-92062	RETAINER-VALVE SPRIN	2							
4	1	1Z1201-62059	ARM-ROCKER	2							
5	1	1Z1203-22065	TAPPET	2							
6	1	1Z1307-02111	GUIDE,ROD-PUSH	1							
7	1	1Z1311-62075	ROD-PUSH	2							
8	1	1Z4907-82085	SPRING-ENGINE VALVE	2							
9	1	1Z4911-82156	CAMSHAFT-COMP	1							
10	2	1Z1310-72301	SHAFT	1							
11	2	1Z2111-82094	DECOMPRESSOR	1							
12	2	1Z9204-32089	PIN	1							
13	2	1Z9204-32240	PIN,SPRING	1							
14	2	1Z9204-32242	PIN,DECOMPRESSOR	1							
15	2	1Z9214-52107	SPRING	1							
16	2	1Z555A-02080	PIN-SPRING,2X8	2							
17	1	1Z9201-52240	NUT,6MM	2							
18	1	1Z9201-52253	NUT	2							
19	1	1Z9215-02198	BOLT	2							

Fig.4. LUBRICATION-EQUIPMENT

0CNP5-G00500 4. LUBRICATION-EQUIPMENT

(A)=FJ100D-AB50

(B)=

(C)=

(D)=

(E)=

(F)=

REF.	LEV.	PARTS NO.	DESCRIPTION	Q'TY						I	R
				(A)	(B)	(C)	(D)	(E)	(F)		
1	1	1Z1100-92175	GASKET	1							
2	1	1Z1611-52128	CAP-OIL FILLER	1							
3	1	1Z9206-62253	PLUG,14X12	1							
4	1	24311-000150	O-RING 1A P-15.0	1							

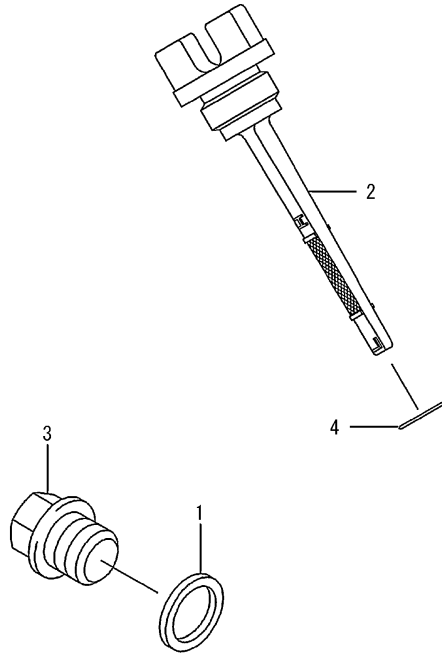


Fig.5. COOLING-EQUIPMENT

0CNP5-G00500 5. COOLING-EQUIPMENT

(A)=FJ100D-AB50

(B)=

(C)=

(D)=

(E)=

(F)=

REF.	LEV.	PARTS NO.	DESCRIPTION	Q'TY						I	R
				(A)	(B)	(C)	(D)	(E)	(F)		
1	1	1Z5904-12095	FAN	1							
2	1	1Z5906-62790	HOUSING-FAN	1							
3	1	1Z9215-22082	COLLAR	4							
4	1	1Z130B-A0614	BOLT-FLANGED,6X14	4							

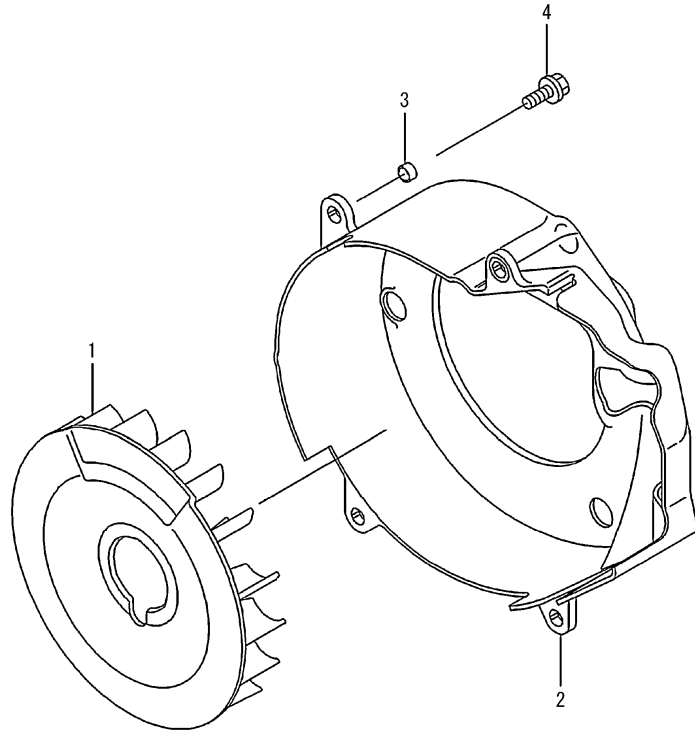


Fig.6. ELECTRIC-EQUIPMENT

0CNP5-G00500 6. ELECTRIC-EQUIPMENT

(A)=FJ100D-AB50

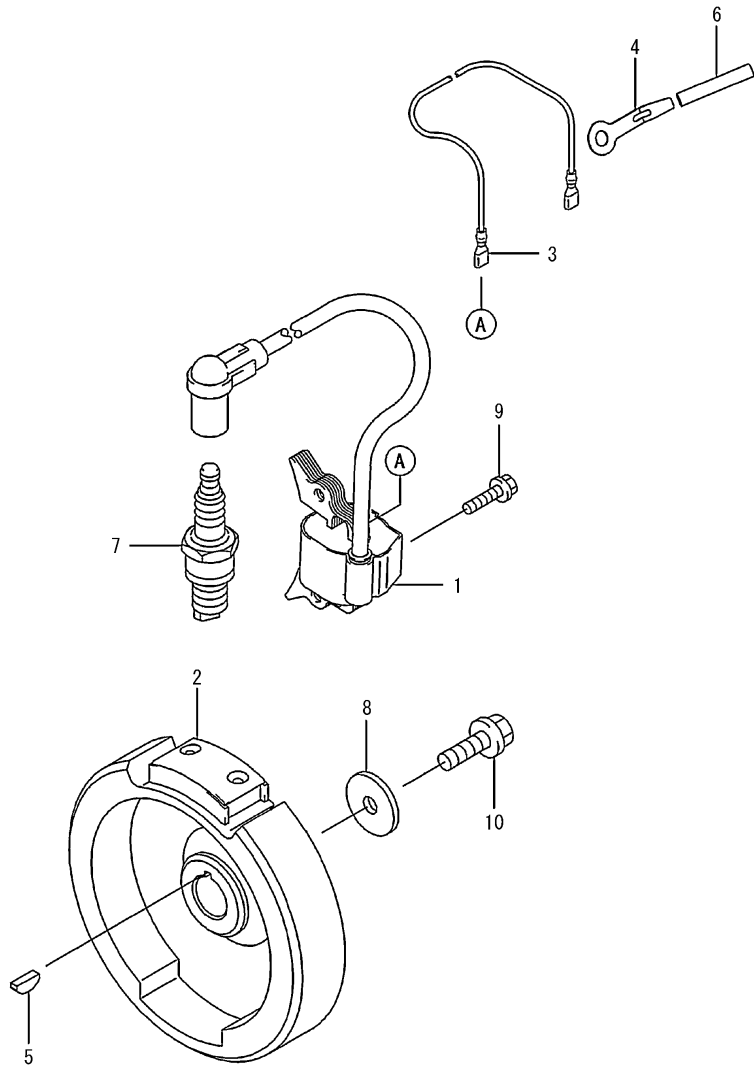
(B)=

(C)=

(D)=

(E)=

(F)=



REF.	LEV.	PARTS NO.	DESCRIPTION	Q'TY						I	R
				(A)	(B)	(C)	(D)	(E)	(F)		
1	1	1Z2112-12101	COIL-IGNITION	1							
2	1	1Z2119-42346	FLYWHEEL-COMP	1							
3	1	1Z2601-12383	WIRE-LEAD	1							
4	1	1Z9203-72165	CLAMP	1							
5	1	1Z9203-80030	KEY	1							
6	1	1Z9205-92156	TUBE	1							
7	1	1Z9207-02117	PLUG-SPARK	1							
8	1	1Z9220-02142	WASHER	1							
9	1	1Z130A-A0520	BOLT-FLANGED,5X20	2							
10	1	1Z130C-A0825	BOLT-FLANGED,8X25	1							

Fig.7. CONTROL-EQUIPMENT

(A)=FJ100D-AB50

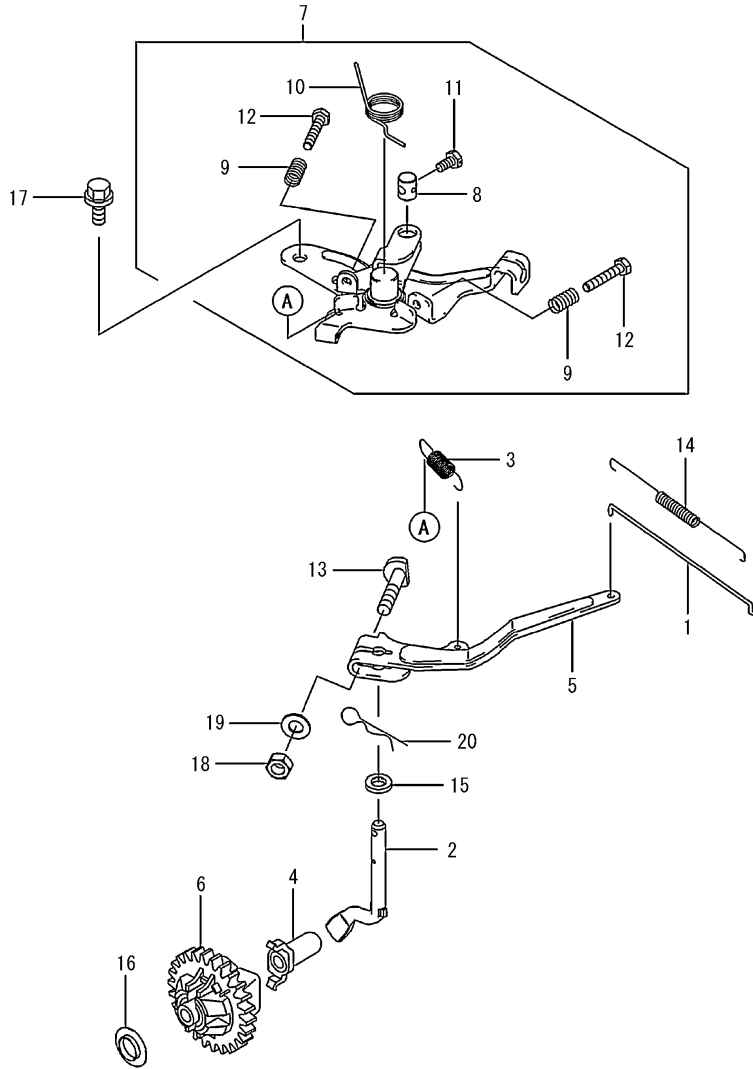
(B)=

(C)=

(D)=

(E)=

(F)=



REF.	LEV.	PARTS NO.	DESCRIPTION	QTY						I	R
				(A)	(B)	(C)	(D)	(E)	(F)		
1	1	1Z1617-12099	LINK	1							
2	1	1Z3900-32094	ARM-PIVOT	1							
3	1	1Z3912-92114	SPRING-GOVERNOR	1							
4	1	1Z4203-62051	SLEEVE	1							
5	1	1Z4910-32166	ARM-GOVERNOR	1							
6	1	1Z4911-02101	GOVERNOR-ASSY	1							
7	1	1Z4911-32192	PANEL-COMP-CONTROL	1							
8	2	1Z9201-52120	NUT	1							
9	2	1Z9214-42266	SPRING	2							
10	2	1Z9214-52140	SPRING	1							
11	2	1Z9215-02288	BOLT	1							
12	2	1Z9215-12147	BOLT,4X22	2							
13	1	1Z9200-22269	BOLT	1							
14	1	1Z9214-52163	SPRING	1							
15	1	1Z9220-02029	WASHER 6	1							
16	1	1Z9220-02158	WASHER	1							
17	1	1Z130A-A0612	BOLT-FLANGED,6X12	2							
18	1	26756-060002	LOCK NUT 6	1							
19	1	22137-060000	WASHER 6, POLISHED	1							
20	1	22372-060000	SNAP PIN 6	1							

Fig.8. CARBURETOR

(A)=FJ100D-AB50

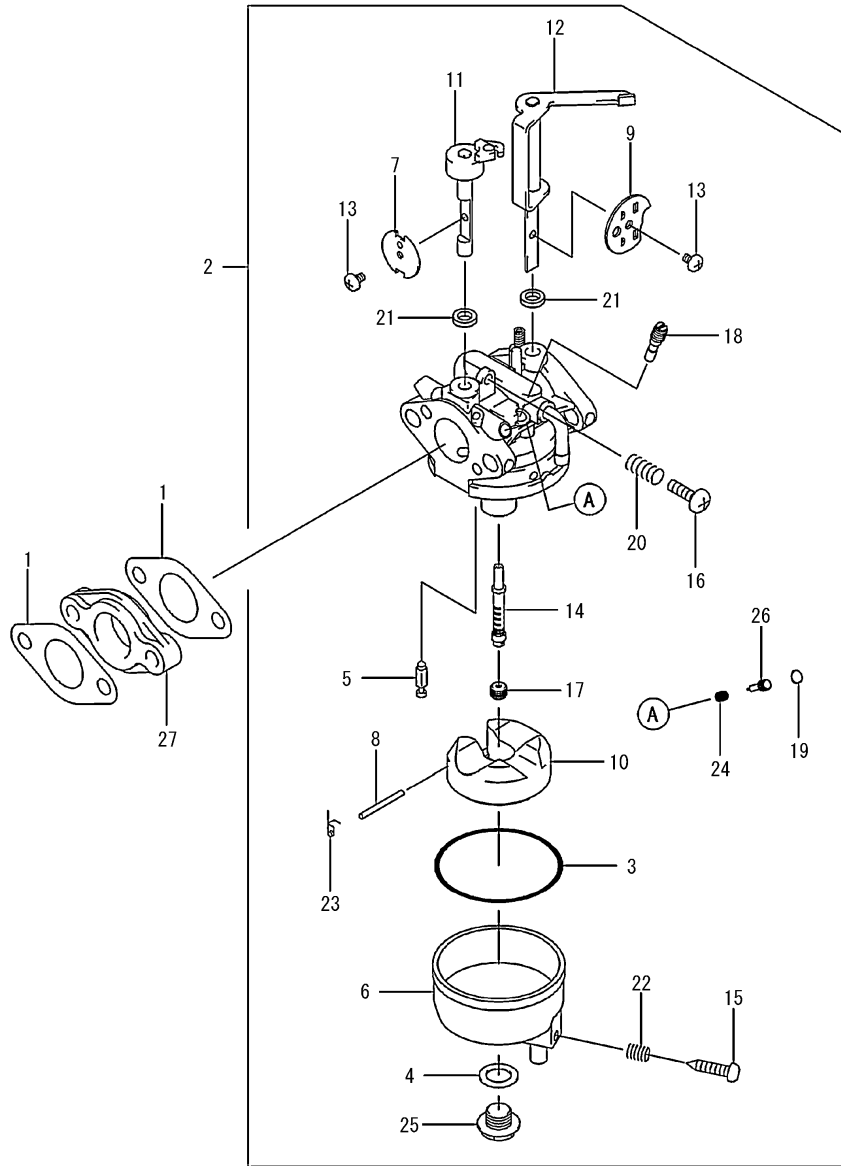
(B)=

(C)=

(D)=

(E)=

(F)=



REF.	LEV.	PARTS NO.	DESCRIPTION	Q'TY						I	R
				(A)	(B)	(C)	(D)	(E)	(F)		
1	1	1Z1106-02051	GASKET,CARBURETOR	2							
2	1	1Z1500-42039	CARBURETOR-ASSY	1							
3	2	1Z1106-02190	GASKET	1							
4	2	1Z1106-12181	GASKET	1							
5	2	1Z1600-92136	NEEDLE-JET	1							
6	2	1Z1602-02150	CHAMBER-FLOAT	1							
7	2	1Z1602-52166	VALVE-THROTTLE	1							
8	2	1Z1604-12224	SHAFT	1							
9	2	1Z1612-62238	VALVE,CHOKE	1							
10	2	1Z1618-32002	FLOAT-ASSY	1							
11	2	1Z1618-52044	VALVE-ASSY-THROTTLE	1							
12	2	1Z1618-62039	VALVE-ASSY-CHOKE	1							
13	2	1Z2301-32058	SCREW-ASSY	2							
14	2	1Z4912-12265	NOZZLE-MAIN	1							
15	2	1Z9200-92348	SCREW	1							
16	2	1Z9200-92349	SCREW	1							
17	2	1Z9206-32431	JET-MAIN,#54	1							
18	2	1Z9206-42146	JET-PILOT,#52	1							
19	2	1Z9206-62244	PLUG	1							
20	2	1Z9208-12234	SPRING	1							
21	2	1Z9209-32100	SEAL	2							
22	2	1Z9214-42333	SPRING	1							
23	2	1Z9214-42335	SPRING	1							
24	2	1Z9214-52122	SPRING	1							
25	2	1Z9215-02263	BOLT	1							
26	2	1Z9217-22075	SCREW	1							
27	1	1Z1607-32225	INSULATOR	1							

Fig.9. AIR-FILTER/MUFFLER

(A)=FJ100D-AB50

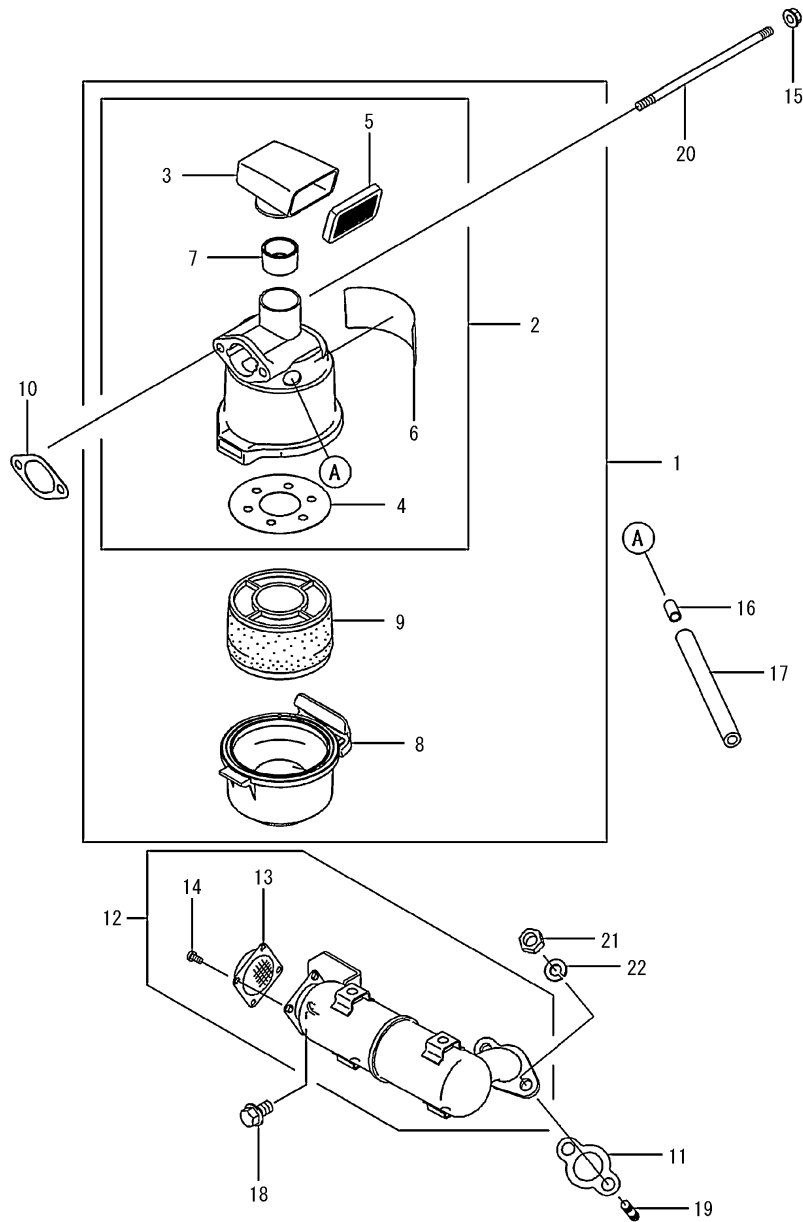
(B)=

(C)=

(D)=

(E)=

(F)=



REF.	LEV.	PARTS NO.	DESCRIPTION	Q'TY						I	R
				(A)	(B)	(C)	(D)	(E)	(F)		
1	1	1Z1101-02582	FILTER-ASSY-AIR	1							
2	2	1Z3209-92416	CASE	1							
3	3	1Z1101-22254	CAP,AIR FILTER	1							
4	3	1Z1327-12231	PLATE	1							
5	3	1Z4901-62079	COVER-SEAL	1							
6	3	1Z5603-12242	LABEL-MANUAL	1							
7	3	1Z9213-92054	BUSHING	1							
8	2	1Z4903-42062	PAN-OIL	1							
9	2	1Z4906-42078	FILTER-AIR	1							
10	1	1Z1106-02036	GASKET,AIR FILTER	1							
11	1	1Z1106-12102	GASKET,MUFFLER	1							
12	1	1Z4906-92413	MUFFLER-ASSY	1							
13	2	1Z1807-72096	ARRESTER-SPARK	1							
14	2	1Z9200-92307	SCREW	4							
15	1	1Z9201-51193	NUT	2							
16	1	1Z9215-22088	COLLAR,6X8X15	1							
17	1	1Z9219-12059	TUBE,7X12X130	1							
18	1	1Z130B-A0814	BOLT-FLANGED,8X14	1							
19	1	1Z171B-A0816	BOLT-STUD,8X16	2							
20	1	1Z172B-A6120	BOLT-STUD,6X120	2							
21	1	26762-080002	NUT M 8	2							
22	1	22217-080000	SPRING WASHER 8	2							

Fig.10. FUEL-TANK/FUEL-VALVE

(A)=FJ100D-AB50

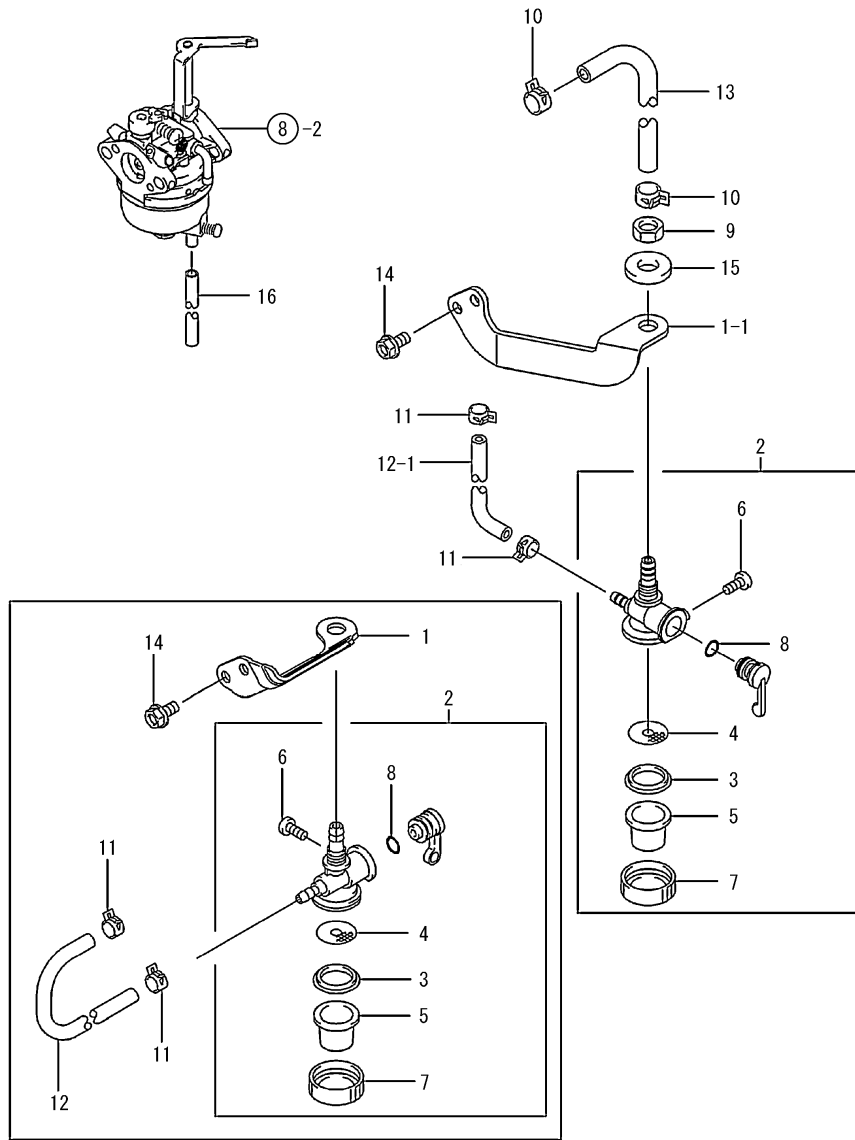
(B)=

(C)=

(D)=

(E)=

(F)=



REF.	LEV.	PARTS NO.	DESCRIPTION	Q'TY						I	R
				(A)	(B)	(C)	(D)	(E)	(F)		
1	1	1Z1105-52004	BRACKET	1							
1-1	1	1Z1105-52008	BRACKET	1							S
(A=F056141)											
2	1	1Z5102-32131	FILTER ASSY	1							
3	2	1Z1100-92021	GASKET	1							
4	2	1Z4901-92095	FILTER SET	1							
5	2	1Z5103-62063	CUP	1							
6	2	1Z9200-92004	SCREW	1							
7	2	1Z9201-52007	NUT	1							
8	2	1Z9205-52002	O-RING	1							
9	1	1Z9201-52317	NUT	1							
10	1	1Z9203-72113	CLAMP	2							
11	1	1Z9203-72116	CLAMP	2							
12	1	1Z9219-02040	TUBE,4X8X180	1							
12-1	1	1Z9219-22137	TUBE,4X8X155	1							S
(A=F056141)											
13	1	1Z9219-22179	TUBE,6X10X135	1							
14	1	1Z130A-A0612	BOLT-FLANGED,6X12	2							
15	1	22117-100000	WASHER 10	1							
16	1	1Z0070-05100	TUBE,VINYL	1							

Fig.11. STARTER

(A)=FJ100D-AB50

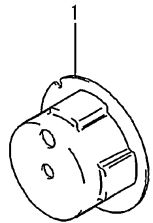
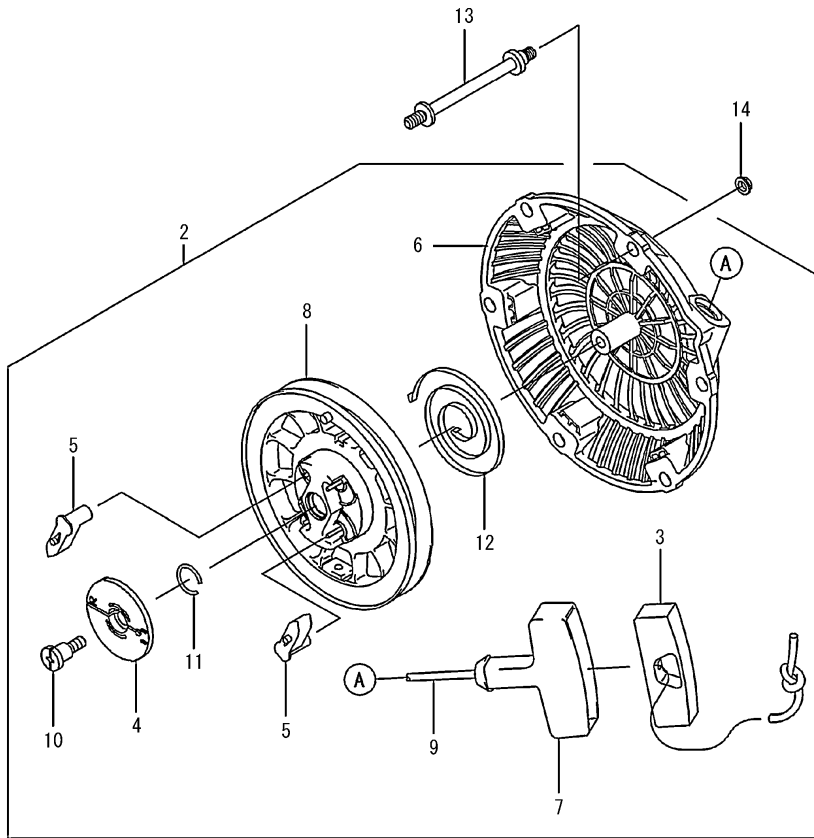
(B)=

(C)=

(D)=

(E)=

(F)=



REF.	LEV.	PARTS NO.	DESCRIPTION	QTY						I	R
				(A)	(B)	(C)	(D)	(E)	(F)		
1	1	1Z4908-02186	PULLEY-STARTING	1							
2	1	1Z4908-82573	STARTER-RECOIL	1							
3	2	1Z1101-22255	CAP,GRIP	1							
4	2	1Z1307-02112	GUIDE	1							
5	2	1Z1316-52099	PAWL,RECOIL STARTER	2							
6	2	1Z3209-92382	CASE,RECOIL STARTER	1							
7	2	1Z4607-52091	GRIP,RECOIL STARTER	1							
8	2	1Z5910-12113	REEL,RECOIL STARTER	1							
9	2	1Z5910-62182	ROPE,4X1450	1							
10	2	1Z9200-92347	SCREW	1							
11	2	1Z9203-32160	RING-SNAP	1							
12	2	1Z9214-52121	SPRING	1							
13	1	1Z9200-42156	STUD	3							
14	1	1Z9201-51193	NUT	3							

Part Number Index

All parts are stipulated in the order of part numbers.

(Depending on the area in which the part is used.)

This index will display the location of the part according to each part number.

PARTS No. INDEX

PARTS No.	Fig.	Ref.No.
1Z0056-06120	1	20
1Z0070-05100	10	16
1Z1100-42143	1	1
1Z1100-82165	1	2
1Z1100-92021	10	3
1Z1100-92175	4	1
1Z1101-02582	9	1
1Z1101-22254	9	3
1Z1101-22255	11	3
1Z1102-22080	1	3
1Z1105-52004	10	1
1Z1105-52008	10	1 -1
1Z1106-02036	9	10
1Z1106-02051	8	1
1Z1106-02190	8	3
1Z1106-12100	1	4
1Z1106-12102	9	11
1Z1106-12104	1	5
1Z1106-12181	8	4
1Z1200-42118	3	1
1Z1200-52104	3	2
1Z1200-92062	3	3
1Z1201-62059	3	4
1Z1203-22065	3	5
1Z1300-12155	2	1
1Z1300-22083	2	2
1Z1300-82061	2	3
1Z1303-72581	2	4
1Z1307-02111	3	6
1Z1307-02112	11	4
1Z130A-A0520	6	9
1Z130A-A0612	1	17
	7	17
	10	14
1Z130B-A0614	5	4
1Z130B-A0625	2	6
1Z130B-A0630	1	18
1Z130B-A0814	9	18
1Z130C-A0825	6	10
1Z130C-A0840	1	19
1Z1310-72301	3	10
1Z1311-62075	3	7
1Z1316-52099	11	5
1Z1325-12068	2	5
1Z1327-12231	9	4
1Z1500-42039	8	2
1Z1600-92136	8	5
1Z1602-02150	8	6
1Z1602-52166	8	7
1Z1604-12224	8	8

PARTS No.	Fig.	Ref.No.
1Z1607-32225	8	27
1Z1611-52128	4	2
1Z1612-62051	1	6
1Z1612-62238	8	9
1Z1617-12099	7	1
1Z1618-32002	8	10
1Z1618-52044	8	11
1Z1618-62039	8	12
1Z171B-A0816	9	19
1Z172B-A6120	9	20
1Z1807-72096	9	13
1Z2111-82094	3	11
1Z2112-12101	6	1
1Z2119-42346	6	2
1Z2301-32058	8	13
1Z2601-12383	6	3
1Z3209-92382	11	6
1Z3209-92402	1	7
1Z3209-92403	1	8
1Z3209-92416	9	2
1Z3900-32094	7	2
1Z3912-92114	7	3
1Z4203-62051	7	4
1Z4607-52091	11	7
1Z4901-56270	1	9
1Z4901-62079	9	5
1Z4901-92095	10	4
1Z4903-42062	9	8
1Z4906-42078	9	9
1Z4906-92413	9	12
1Z4907-82085	3	8
1Z4908-02186	11	1
1Z4908-82573	11	2
1Z4910-32166	7	5
1Z4911-02101	7	6
1Z4911-32192	7	7
1Z4911-82156	3	9
1Z4912-06170	1	10
1Z4912-12265	8	14
1Z5102-32131	10	2
1Z5103-62063	10	5
1Z555A-02080	3	16
1Z5603-12242	9	6
1Z5904-12095	5	1
1Z5905-12375	2	7
1Z5906-62790	5	2
1Z5910-12113	11	8
1Z5910-62182	11	9
1Z9200-22269	7	13
1Z9200-42156	11	13

PARTS No.	Fig.	Ref.No.
1Z9200-92004	10	6
1Z9200-92307	9	14
1Z9200-92322	1	11
1Z9200-92347	11	10
1Z9200-92348	8	15
1Z9200-92349	8	16
1Z9201-51193	9	15
	11	14
1Z9201-52007	10	7
1Z9201-52120	7	8
1Z9201-52240	3	17
1Z9201-52253	3	18
1Z9201-52317	10	9
1Z9203-32051	2	8
1Z9203-32160	11	11
1Z9203-72113	10	10
1Z9203-72116	10	11
1Z9203-72165	6	4
1Z9203-80030	2	9
	6	5
1Z9204-31037	1	12
1Z9204-32089	3	12
1Z9204-32240	3	13
1Z9204-32242	3	14
1Z9204-92261	1	13
1Z9205-51343	1	14
1Z9205-52002	10	8
1Z9205-92156	6	6
1Z9206-32431	8	17
1Z9206-42146	8	18
1Z9206-62244	8	19
1Z9206-62253	4	3
1Z9207-02117	6	7
1Z9208-12234	8	20
1Z9209-32100	8	21
1Z9213-92054	9	7
1Z9214-12120	1	15
1Z9214-42266	7	9
1Z9214-42333	8	22
1Z9214-42335	8	23
1Z9214-52107	3	15
1Z9214-52121	11	12
1Z9214-52122	8	24
1Z9214-52140	7	10
1Z9214-52163	7	14
1Z9215-02198	3	19
1Z9215-02263	8	25
1Z9215-02288	7	11
1Z9215-12147	7	12
1Z9215-22082	5	3

PARTS No.	Fig.	Ref.No.
1Z9215-22088	9	16
1Z9217-22075	8	26
1Z9219-02040	10	12
1Z9219-12059	9	17
1Z9219-22137	10	12 -1
1Z9219-22179	10	13
1Z9220-02029	7	15
1Z9220-02142	6	8
1Z9220-02158	7	16
1Z9991-62175	1	16



YANMAR CO.,LTD.

CONTENTS

MODEL : QT30PQ
PC NO : 0CNP4-G98100

Fig.No. GROUP NAME

PULLEY & TENSION SEC.

1. ENGINE STAY
2. ENGINE PULLEY
3. MAIN PULLEY
4. TENSION CLUTCH

T/M & ROTOR SEC.

5. TRANSMISSION
6. FENDER
7. ROTOR

HANDLE SEC.

8. HANDLE
9. HANDLING LEVER
10. BELT COVER
11. FUEL TANK

FRAME SEC.

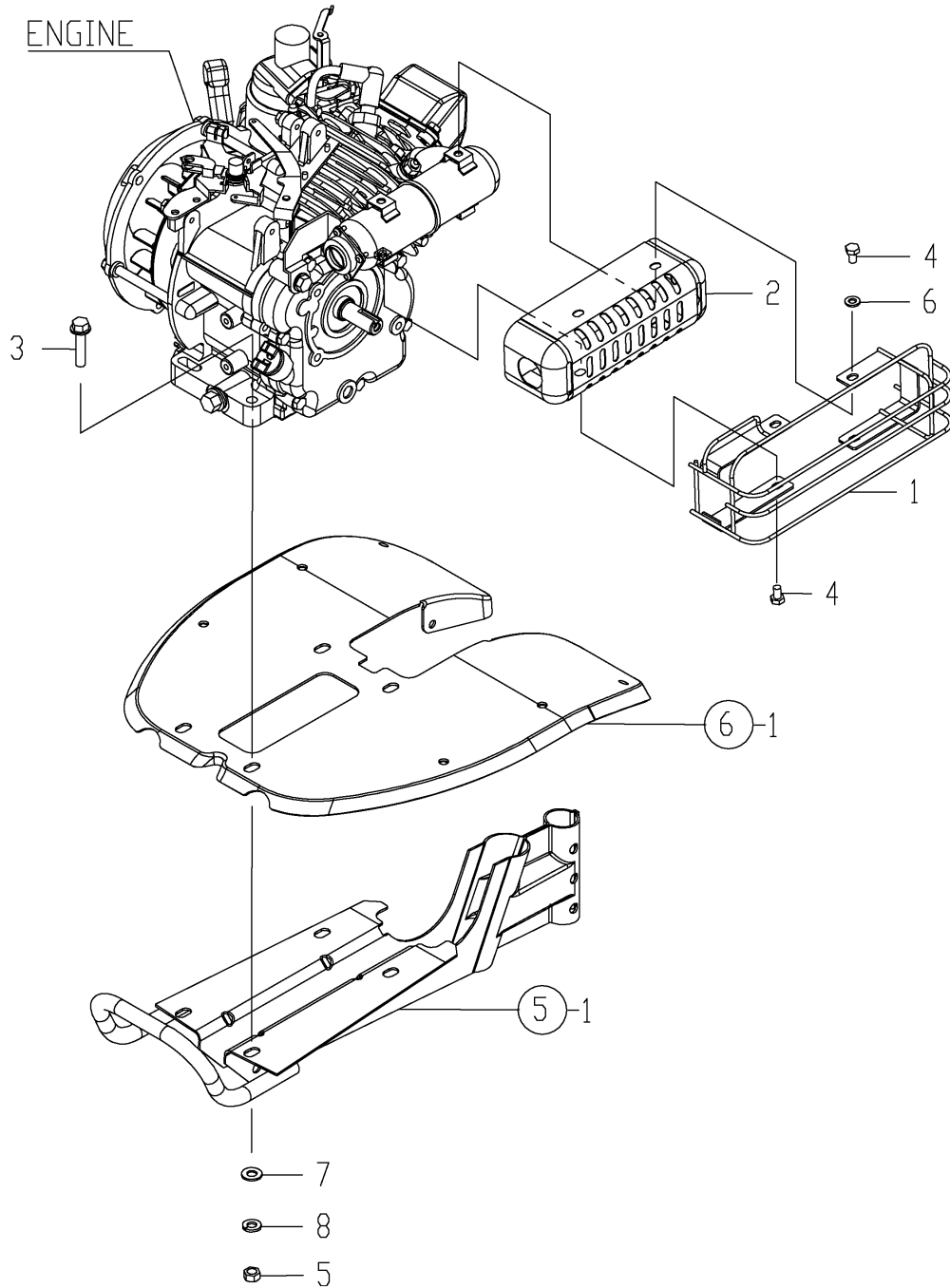
12. BONNET
13. DRAG BAR

ELECT., LABELS & ACC.

14. ELECTRIC PARTS
15. LABELS
16. TOOLS

Fig.No. GROUP NAME

Fig.1. ENGINE STAY



0CNP4-G98100 1. ENGINE STAY

(A)=QT30PQ
(B)=
(C)=

(D)=
(E)=
(F)=

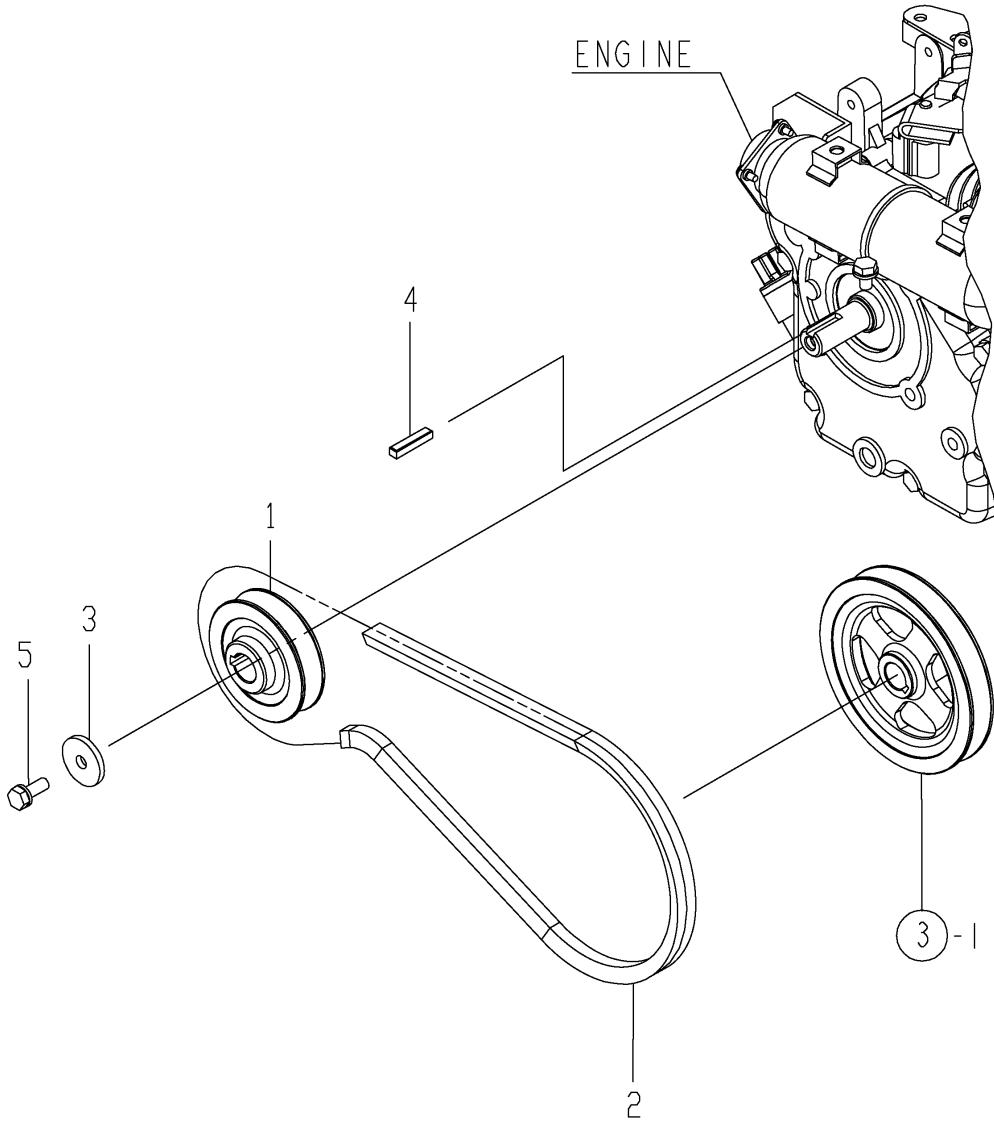
REF.	LEV.	PARTS NO.	DESCRIPTION	QTY						I	R	
				(A)	(B)	(C)	(D)	(E)	(F)			
1	1	1A2700-11100	MUFFLER COVER A CMP	1								
I 1-1	1	1A2700-11101	MUFFLER COVER A CMP	1								N
(A=FXXXXXX)												
2	1	1A2700-11200	MUFFLER COVER B CMP	1								
2-1	1	1A2700-11201	MUFFLER COVER B CMP	1								N
(A=FXXXXXX)												
3	1	26106-080352	BOLT M 8X 35 PLATED									4
4	1	26116-060102	BOLT M 6X 10 PLATED									3
5	1	26717-080002	NUT 8									4
6	1	22137-060000	WASHER 6, POLISHED									2
7	1	22137-080000	WASHER 8, POLISHED									4
8	1	22217-080000	SPRING WASHER 8									4

Fig.2. ENGINE PULLEY

0CNP4-G98100 2. ENGINE PULLEY

(A)=QT30PQ
(B)=
(C)=

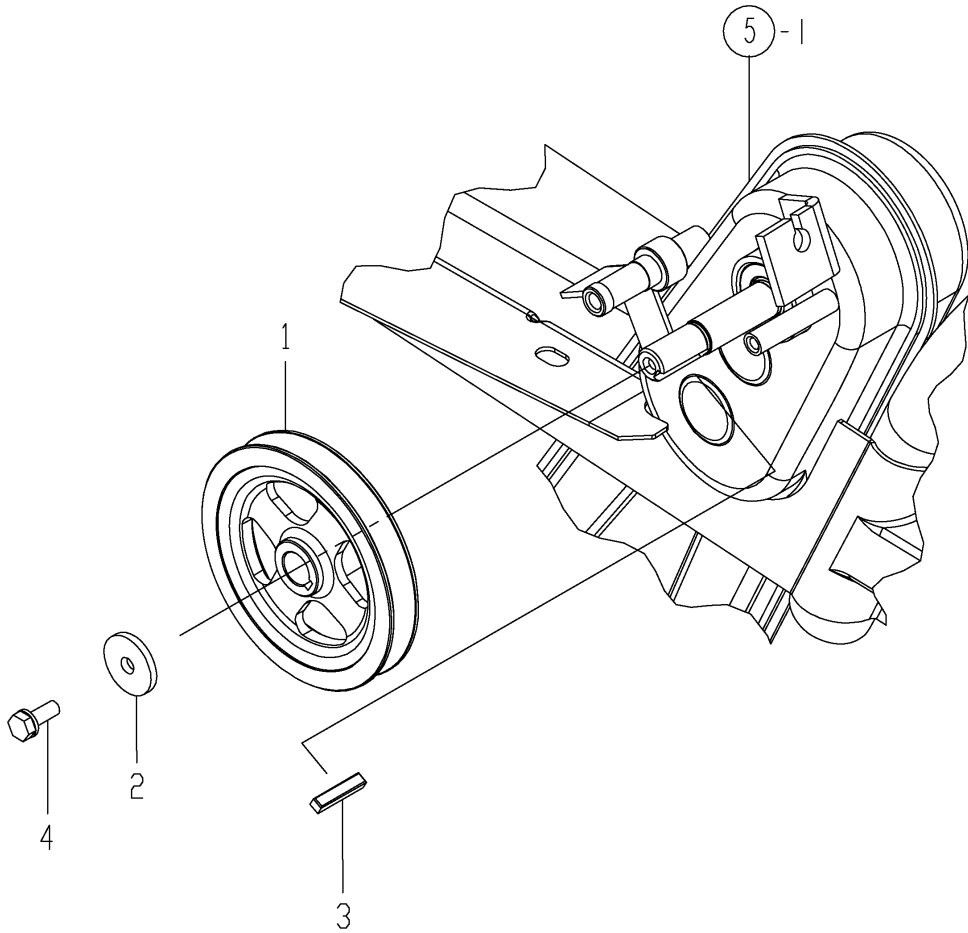
(D)=
(E)=
(F)=



REF.	LEV.	PARTS NO.	DESCRIPTION	QTY						I	R
				(A)	(B)	(C)	(D)	(E)	(F)		
1	1	1A2700-12000	ENGINE PULLEY 65	1							
2	1	1A2700-12110	V BELT LA28	1							
3	1	1A2700-13750	WASHAR 7X26XT3.2	1							
4	1	22550-050250	KEY 5X25	1							
5	1	26013-060162	BOLT M 6X 16	1							

Fig.3. MAIN PULLEY

0CNP4-G98100 3. MAIN PULLEY

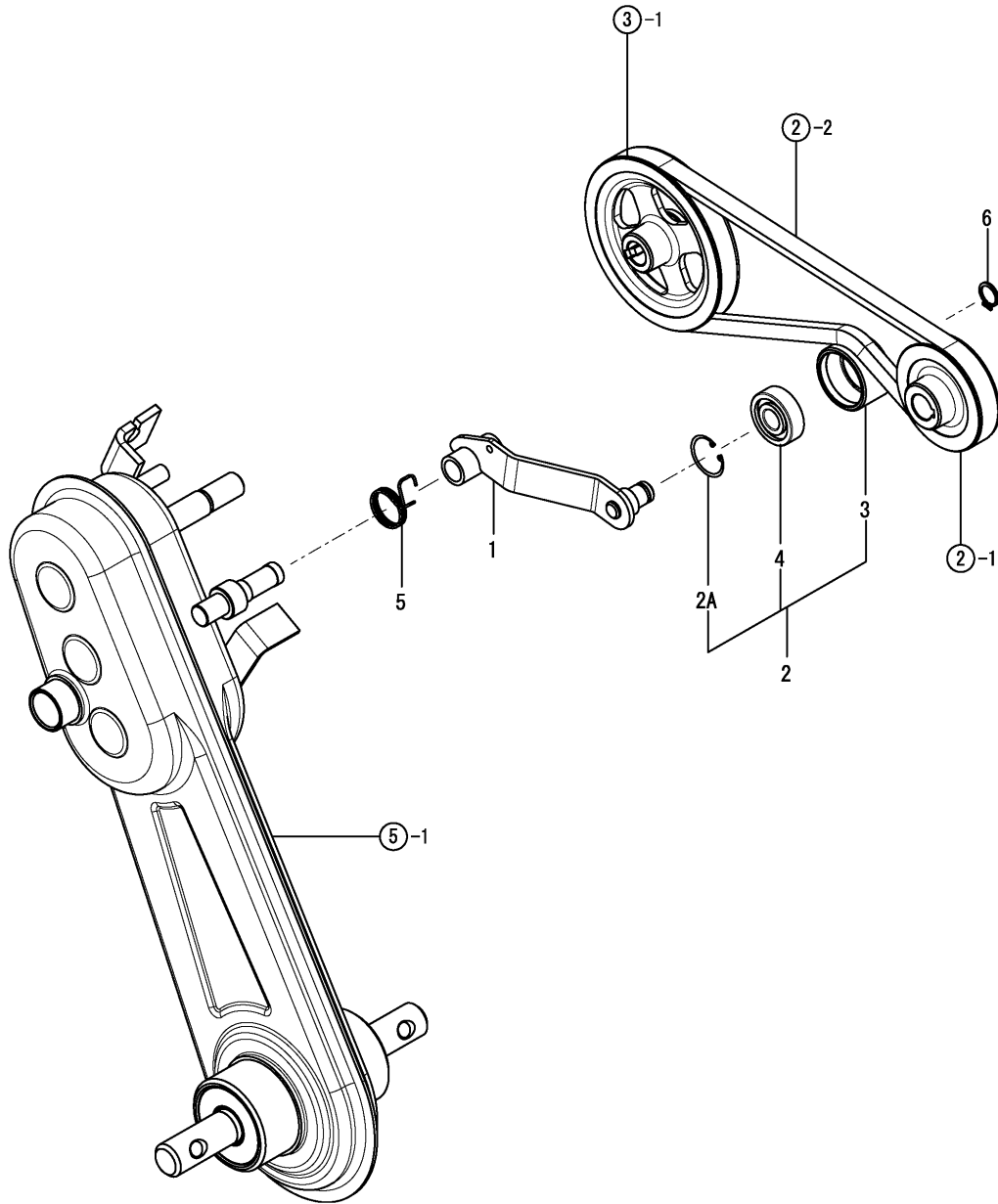


(A)=QT30PQ
(B)=
(C)=

(D)=
(E)=
(F)=

REF.	LEV.	PARTS NO.	DESCRIPTION	QTY						I	R
				(A)	(B)	(C)	(D)	(E)	(F)		
1	1	1A2700-13000	MAIN PULLEY 105	1							
2	1	1A2700-13750	WASHAR 7X26XT3.2	1							
3	1	22550-050250	KEY 5X25	1							
4	1	26013-060162	BOLT M 6X 16	1							

Fig.4. TENSION CLUTCH



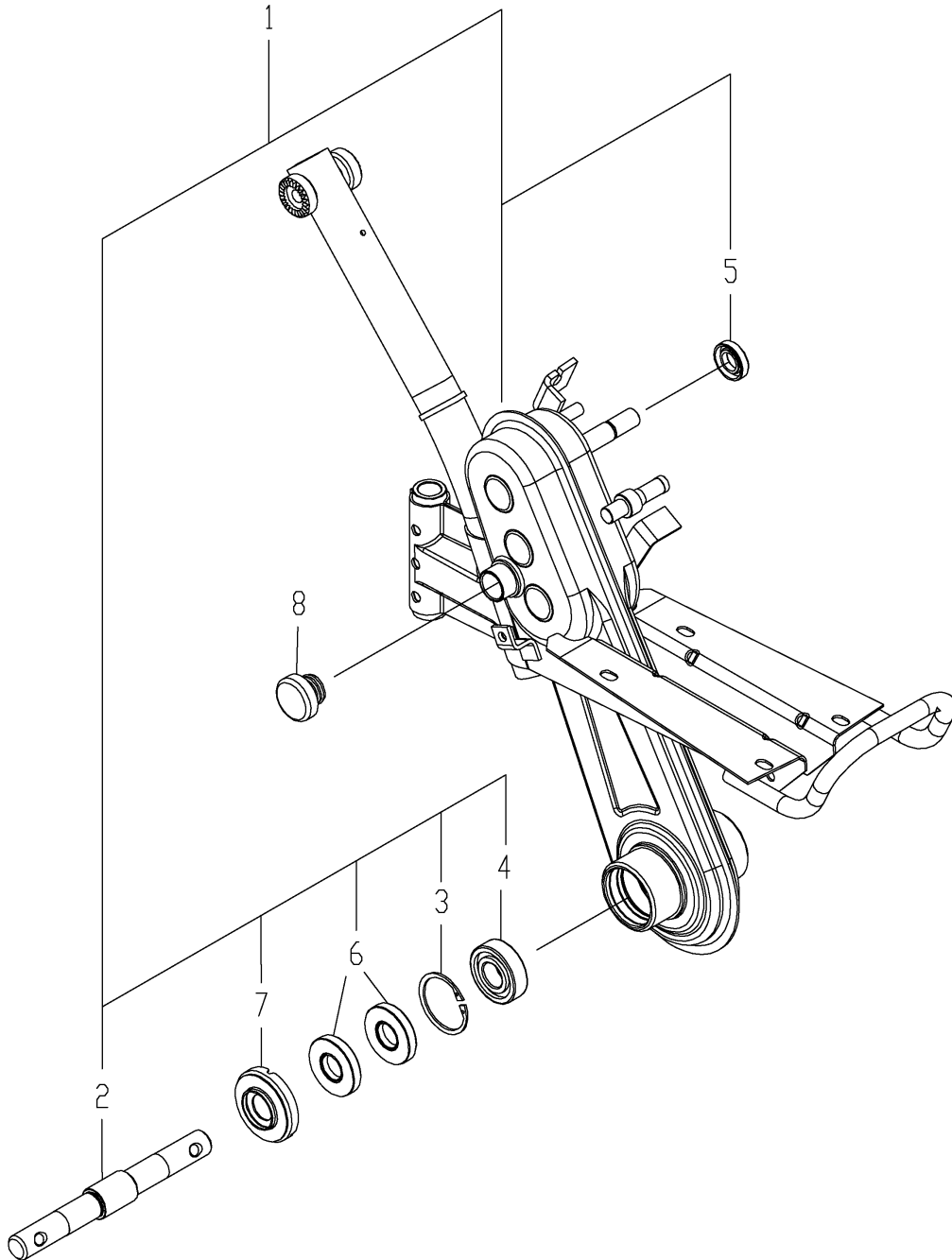
0CNP4-G98100 4. TENSION CLUTCH

(A)=QT30PQ
(B)=
(C)=

(D)=
(E)=
(F)=

REF.	LEV.	PARTS NO.	DESCRIPTION	QTY						I	R	
				(A)	(B)	(C)	(D)	(E)	(F)			
1	1	1A2700-13500	TENSION ARM CMP	1								
2	1	1A2700-13600	TENSION PULLEY CMP	1								
I 2A	2	22252-000320	CIRCLIP 32	1								W
(A=FXXXXXX)												
3	2	1A2700-13610	TENSION PULLEY	1								
4	2	24104-062010	BALL BEARING	1								
5	1	1A2700-13701	SPRING,TENSIONRETURN	1								
6	1	22242-000120	CIRCLIP 12	1								

Fig.5. TRANSMISSION



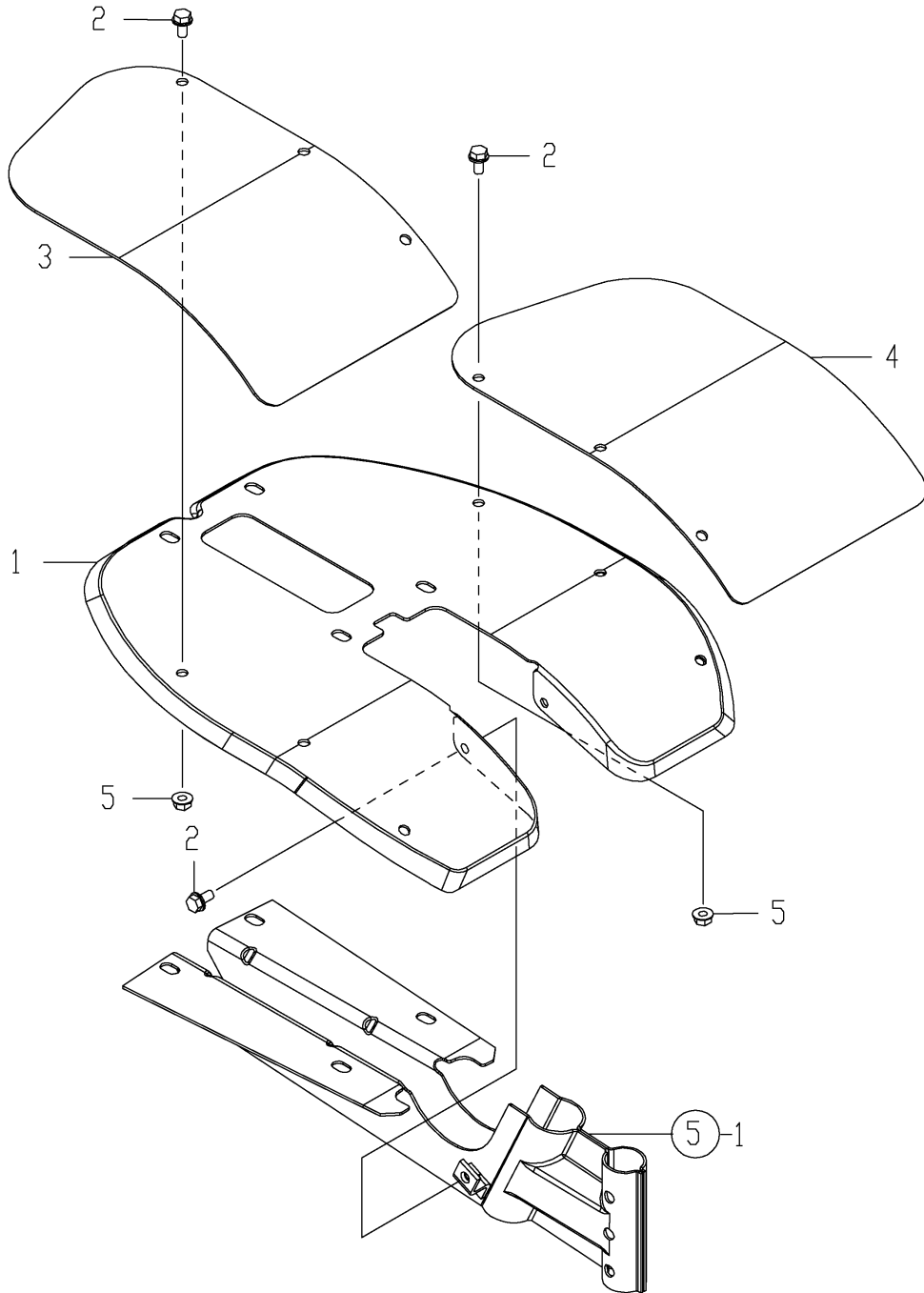
0CNP4-G98100 5. TRANSMISSION

(A)=QT30PQ
(B)=
(C)=

(D)=
(E)=
(F)=

REF.	LEV.	PARTS NO.	DESCRIPTION	QTY						I	R
				(A)	(B)	(C)	(D)	(E)	(F)		
1	1	1A2700-21000	TRANSMISSION CMP	1							
2	2	1A2700-24050	WHEEL SHAFT	1							
3	2	22252-000470	CIRCLIP 47(H)	2							
4	2	24101-062044	BALL BEARING #6204	2							
5	2	24421-153007	SEAL TC15 30 07, OIL	1							
6	2	24421-204708	SEAL TC20 47 08, OIL	4							
7	1	1A2700-21700	BOSS CAP CMP	2							
8	1	1A1270-28160	COVER 35,OILING	1							

Fig.6. FENDER



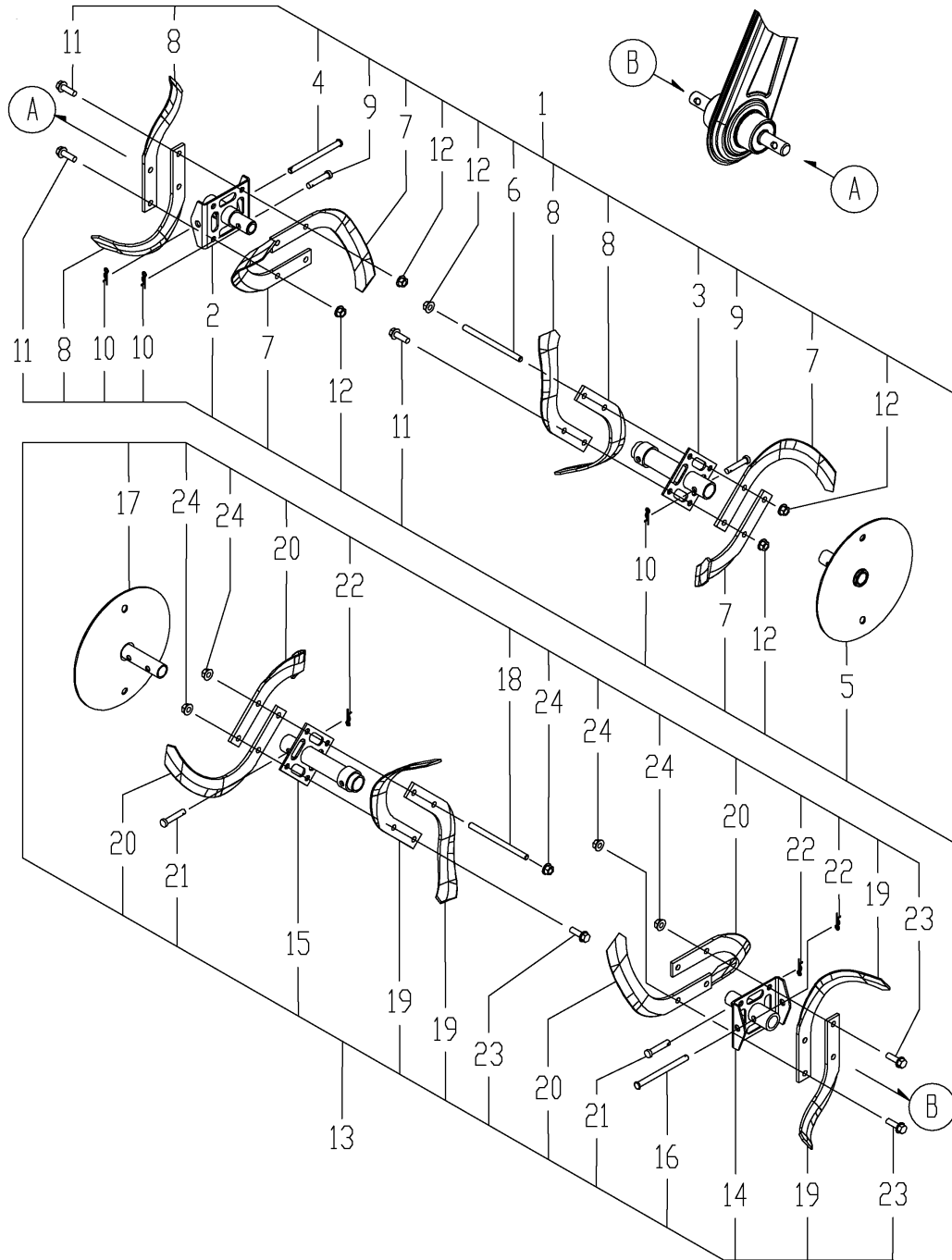
0CNP4-G98100 6. FENDER

(A)=QT30PQ
(B)=
(C)=

(D)=
(E)=
(F)=

REF.	LEV.	PARTS NO.	DESCRIPTION	QTY						I	R
				(A)	(B)	(C)	(D)	(E)	(F)		
1	1	1A2700-32000	FENDER	1							
2	1	26106-060122	BOLT M 6X 12 PLATED	8							
3	1	1A2700-32100	FENDER(EXTENSION L)	1							
4	1	1A2700-32110	FENDER(EXTENSION R)	1							
5	1	26367-060002	NUT M 6	6							

Fig.7. ROTOR



(A)=QT30PQ

(B)=

(C)=

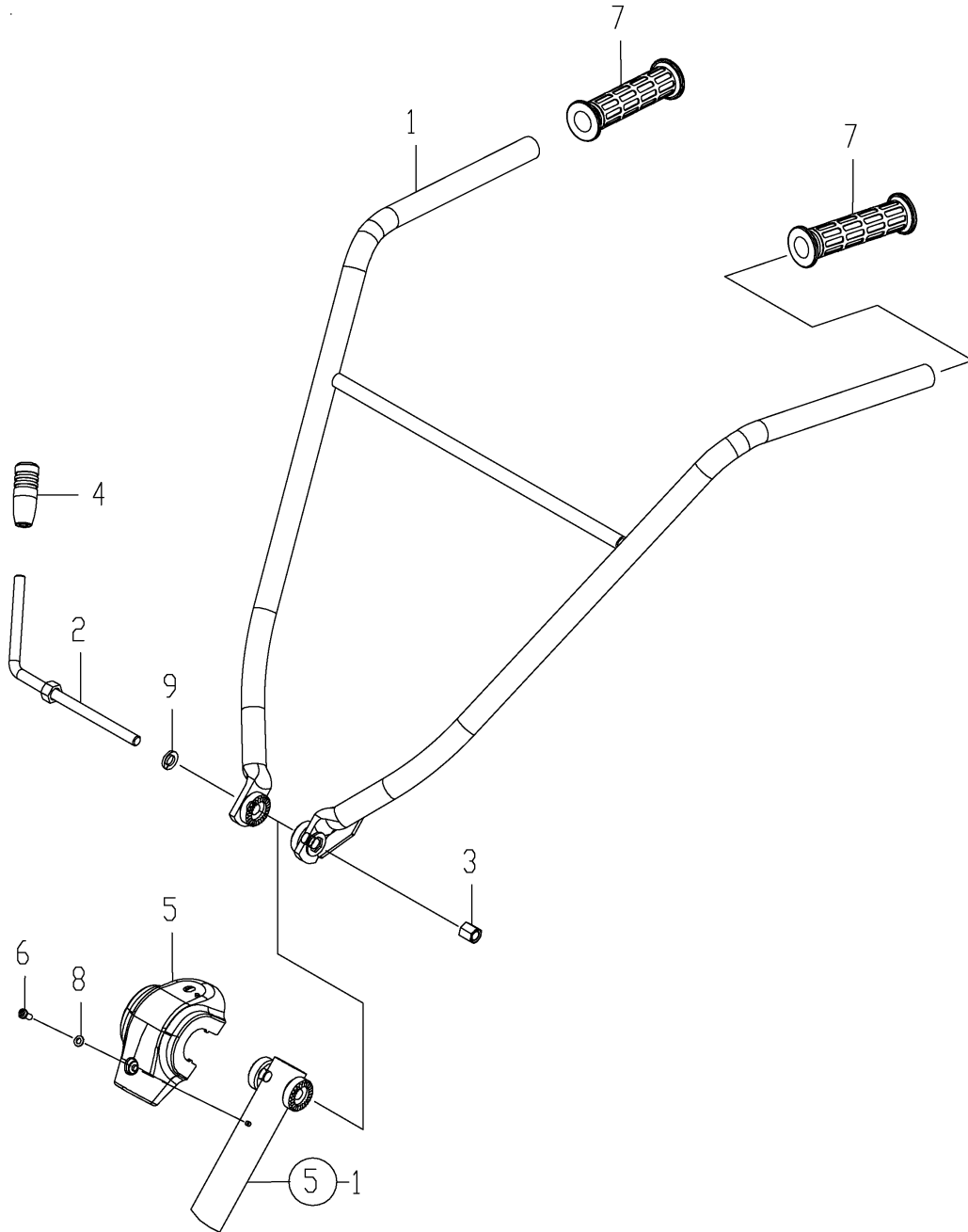
(D)=

(E)=

(F)=

REF.	LEV.	PARTS NO.	DESCRIPTION	Q'TY						I	R
				(A)	(B)	(C)	(D)	(E)	(F)		
1	1	1A2700-34000	ROTOR L,ASSY	1							
2	2	1A2700-35000	SHAFT ROTOR,CMP	1							
3	2	1A2700-35100	SHAFT CMP,EXTENSION	1							
4	2	1A2190-35200	PIN 8X100,FLAT HEAD	1							
5	2	1A2700-35200	DISC CMP	1							
6	2	1A2700-35300	ROD, ROTOR	2							
7	2	1A2700-35500	SPADING TINE L	4							
8	2	1A2700-35510	SPADING TINE R	4							
9	2	1A1540-46010	PIN 8X35,FLAT HEAD	2							
10	2	22372-080000	SNAP PIN (JASO 8)	3							
11	2	26106-080252	BOLT M 8X 25 PLATED	6							
12	2	26367-080002	U-NUT M 8	10							
13	1	1A2700-34100	ROTOR R,ASSY	1							
14	2	1A2700-35000	SHAFT ROTOR,CMP	1							
15	2	1A2700-35100	SHAFT CMP,EXTENSION	1							
16	2	1A2190-35200	PIN 8X100,FLAT HEAD	1							
17	2	1A2700-35200	DISC CMP	1							
18	2	1A2700-35300	ROD, ROTOR	2							
19	2	1A2700-35500	SPADING TINE L	4							
20	2	1A2700-35510	SPADING TINE R	4							
21	2	1A1540-46010	PIN 8X35,FLAT HEAD	2							
22	2	22372-080000	SNAP PIN (JASO 8)	3							
23	2	26106-080252	BOLT M 8X 25 PLATED	6							
24	2	26367-080002	U-NUT M 8	10							

Fig.8. HANDLE



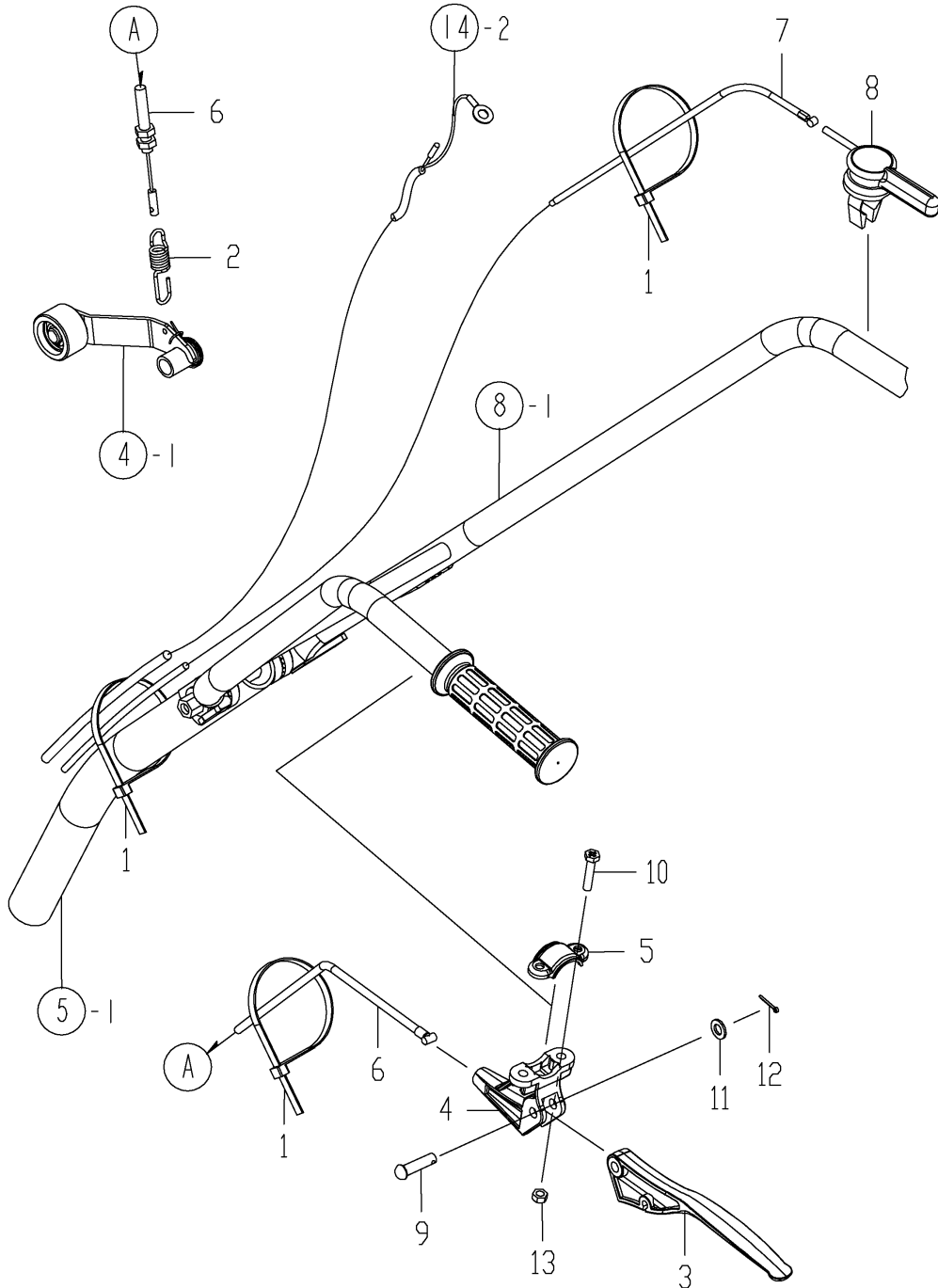
0CNP4-G98100 8. HANDLE

(A)=QT30PQ
(B)=
(C)=

(D)=
(E)=
(F)=

REF.	LEV.	PARTS NO.	DESCRIPTION	QTY						I	R
				(A)	(B)	(C)	(D)	(E)	(F)		
1	1	1A2700-51500	HANDLE CMP	1							
2	1	1A2700-51700	LEVER BOLT CMP	1							
3	1	1A2490-51850	NUT,M10	1							
4	1	1A2700-51850	GRIP CHANGE LEVER	1							
5	1	1A2700-52000	HANDLE COVER	1							
6	1	1A2311-55100	SCREW M 5X 12	1							
7	1	1A2700-55600	GRIP,HANDLE	2							
I 7-1	1	1A2700-55601	GRIP,HANDLE	1							N
(A=FXXXXXX)											
8	1	1A1750-90150	WASHER 5,PLAIN	1							
9	1	22217-100000	SPRING WASHER 10	1							

Fig.9. HANDLING LEVER



(A)=QT30PQ

(B)=

(C)=

(D)=

(E)=

(F)=

REF.	LEV.	PARTS NO.	DESCRIPTION	QTY						I	R
				(A)	(B)	(C)	(D)	(E)	(F)		
1	1	1E6102-84970	BAND 140,WIRE LOCK	3							
2	1	1A2700-55100	SPRING, MAIN CLUTCH	1							
3	1	1A2700-55200	LEVER, MAIN CLUTCH	1							
I	3-1	1A2700-55201 (A=FXXXXXX)	LEVER, MAIN CLUTCH	1							R
4	1	1A2700-55210	STAY, MAIN CLUTCH	1							
I	4-1	1A2700-55211 (A=FXXXXXX)	STAY, MAIN CLUTCH	1							N
5	1	1A2700-55220	LEVER CLAMP	1							
6	1	1A2700-55500	WIRE, MAIN CLUTCH	1							
7	1	1A2700-55550	WIRE, THROTTLE	1							
8	1	1A2191-55581	LEVER, ACCELERATOR	1							
9	1	1A2700-55650	PIN 8X27	1							
10	1	1A2700-55700	BOLT, 6X30	2							
11	1	22117-080000	WASHER 8	1							
12	1	22417-250200	COTTER PIN 2.5X20	1							
13	1	26717-060002	NUT M 6	2							

Fig.10. BELT COVER

(A)=QT30PQ
(B)=
(C)=

(D)=
(E)=
(F)=

REF.	LEV.	PARTS NO.	DESCRIPTION	QTY						I	R
				(A)	(B)	(C)	(D)	(E)	(F)		
1	1	1A2700-62000	BELT COVER	1							
2	1	1A2700-62100	BACK COVER CMP	1							
3	1	26013-060162	BOLT M 6X 16	1							
4	1	26013-080162	BOLT W/WASHER M8X16	3							
5	1	26106-060122	BOLT M 6X 12 PLATED	1							
6	1	22137-060000	WASHER 6, POLISHED	1							
7	1	22137-080000	WASHER 8, POLISHED	3							

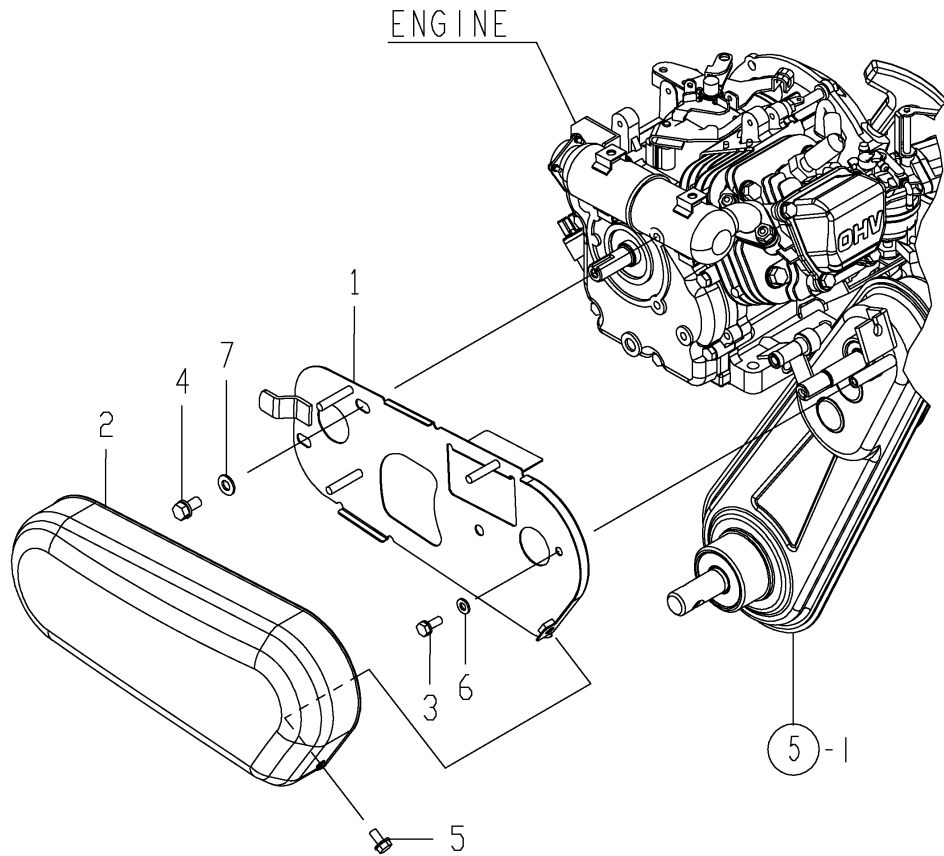
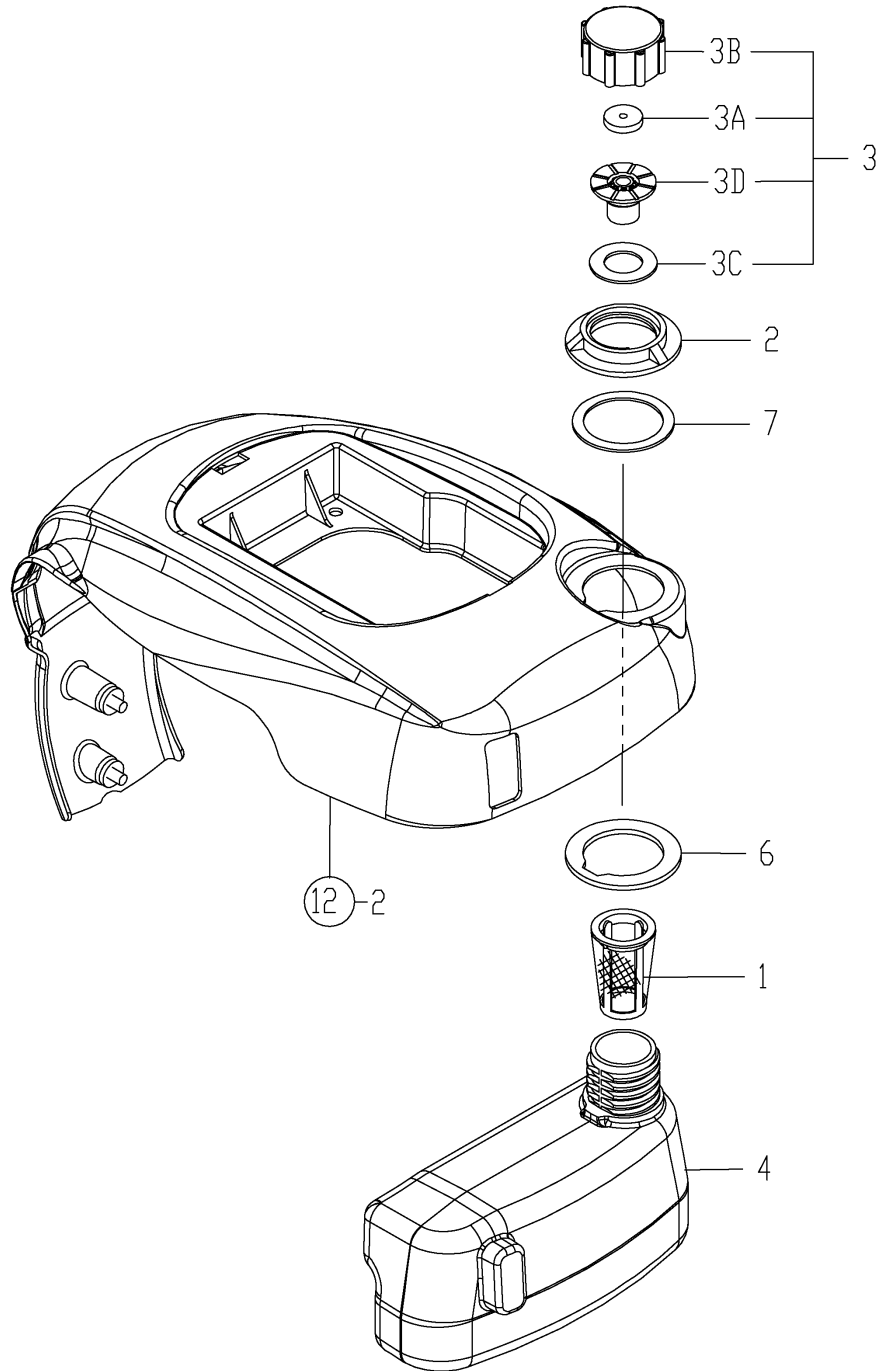


Fig.11. FUEL TANK

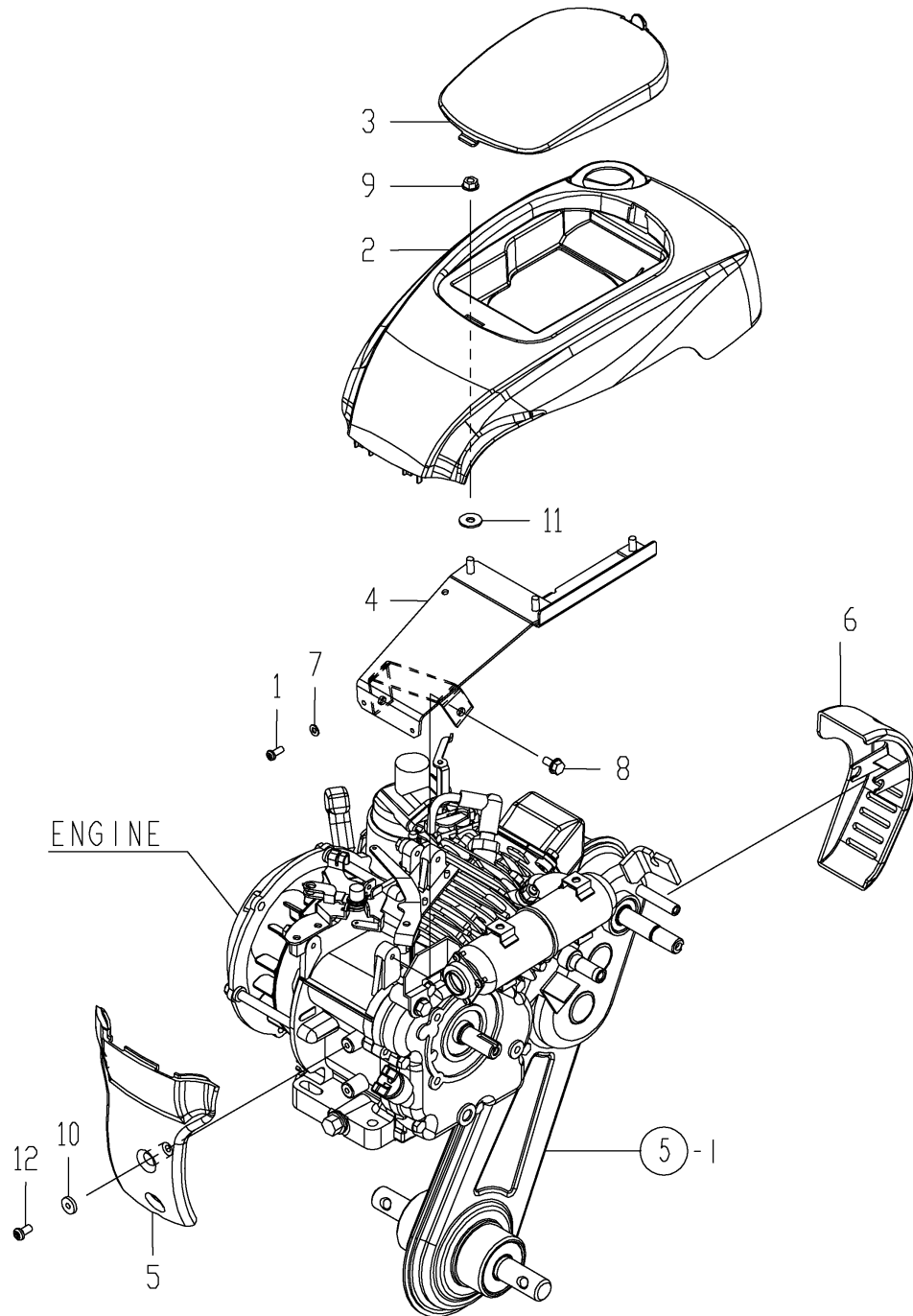


(A)=QT30PQ
(B)=
(C)=

(D)=
(E)=
(F)=

REF.	LEV.	PARTS NO.	DESCRIPTION	QTY						I	R
				(A)	(B)	(C)	(D)	(E)	(F)		
1	1	1D2042-41200	STRAINER,FUEL	1							
2	1	1A1540-62110	RING,MOUNTING	1							
3	1	1A2700-63300	CAP ASSY, FUEL TANK	1							
3A	2	1D2040-41130	ELEMENT, FUEL	1							
3B	2	1A1540-62100	CAP,FUEL TANK	1							
3C	2	1A2700-63310	PACKING,TANK CAP	1							
3D	2	1A2700-63320	BREATHER	1							
4	1	1A2700-63000	FUEL TANK	1							
6	1	1A2700-63200	CUSHION	1							
7	1	1A2700-63210	SPACER.RUBBER	1							

Fig.12. BONNET



(A)=QT30PQ

(B)=

(C)=

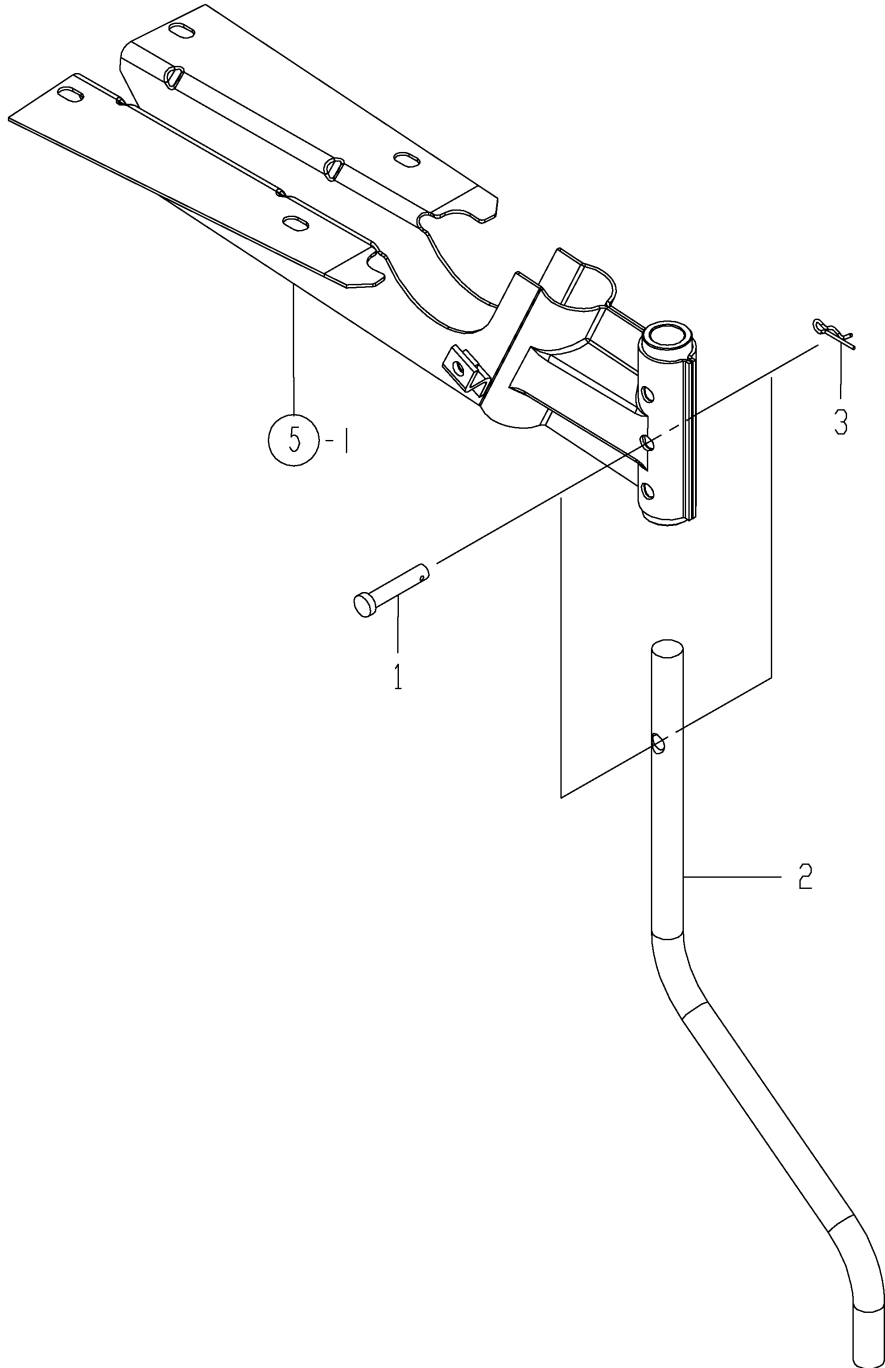
(D)=

(E)=

(F)=

REF.	LEV.	PARTS NO.	DESCRIPTION	QTY						I	R
				(A)	(B)	(C)	(D)	(E)	(F)		
1	1	1A2311-55100	SCREW M 5X 12	2							
2	1	1A2700-64000	BONNET	1							
I 2-1	1	1A2700-64001	BONNET	1							N
(A=FXXXXXX)											
3	1	1A2700-64010	BONNET COVER	1							
I 3-1	1	1A2700-64011	BONNET COVER	1							N
(A=FXXXXXX)											
4	1	1A2700-64101	BONNET STAY CMP	1							
5	1	1A2700-64200	FRONT COVER	1							
I 5-1	1	1A2700-64201	FRONT COVER	1							N
(A=FXXXXXX)											
6	1	1A2700-64300	REAR COVER	1							
I 6-1	1	1A2700-64301	REAR COVER	1							N
(A=FXXXXXX)											
7	1	1A1750-90150	WASHER 5,PLAIN	2							
8	1	26106-060122	BOLT M 6X 12 PLATED	3							
9	1	26367-060002	NUT M 6	3							
10	1	1A2700-64210	SPACER,15X5XT2.8	2							
11	1	1C6020-73090	WASHER 7X19X1.6	3							
12	1	26557-060122	SCREW M 6X 12,PAN HD	2							

Fig.13. DRAG BAR



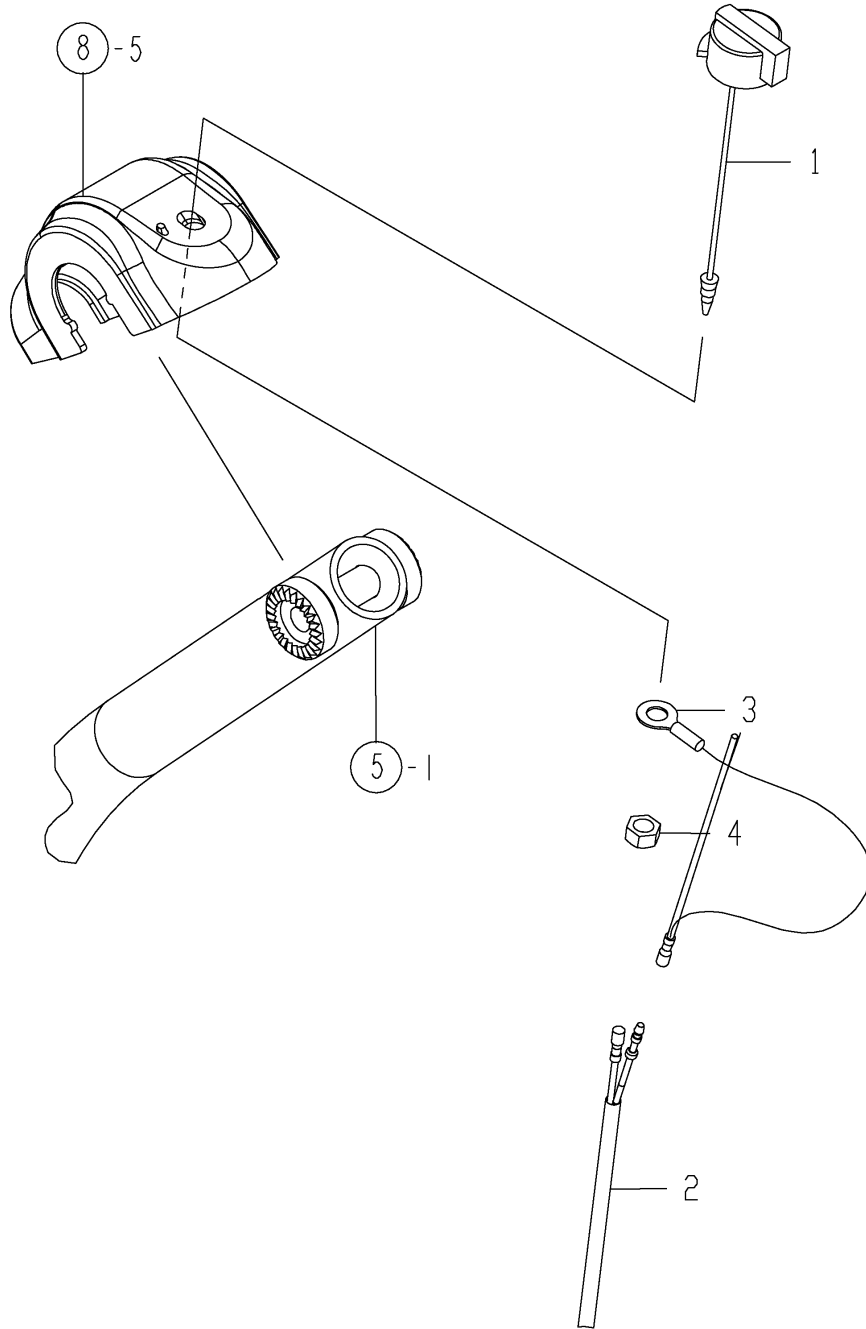
0CNP4-G98100 13. DRAG BAR

(A)=QT30PQ
(B)=
(C)=

(D)=
(E)=
(F)=

REF.	LEV.	PARTS NO.	DESCRIPTION	QTY						I	R	
				(A)	(B)	(C)	(D)	(E)	(F)			
1	1	1A1540-46010	PIN 8X35,FLAT HEAD	1								
2	1	1A2700-70000	DRAG BAR	1								
3	1	22372-080000	SNAP PIN (JASO 8)	1								

Fig.14. ELECTRIC PARTS

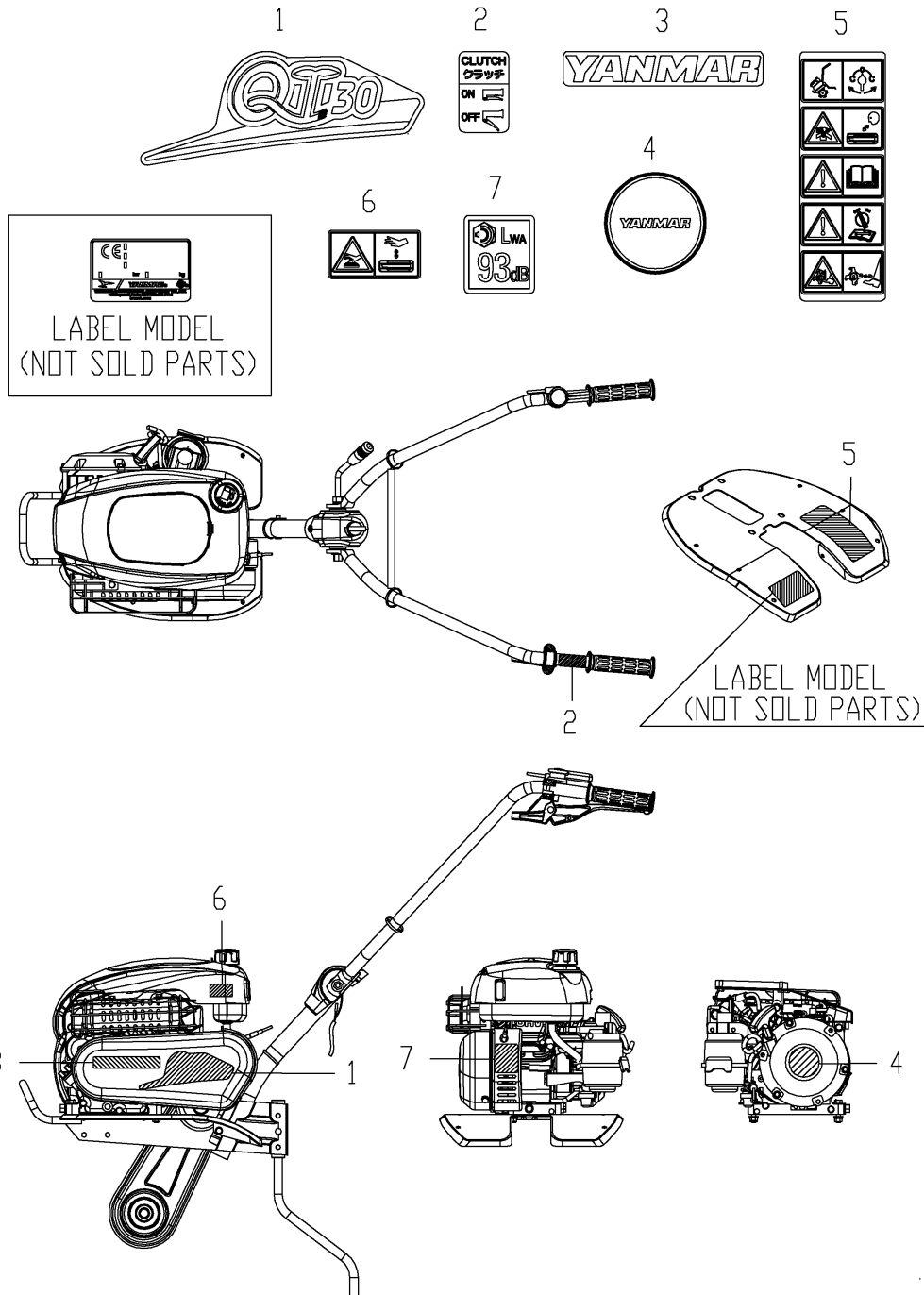


(A)=QT30PQ
(B)=
(C)=

(D)=
(E)=
(F)=

REF.	LEV.	PARTS NO.	DESCRIPTION	QTY						I	R
				(A)	(B)	(C)	(D)	(E)	(F)		
1	1	1A1750-40800	SWITCH,STOP	1							
2	1	1A2700-83001	CORD, EARTH	1							
3	1	1A2700-83050	CORD,SWITCH	1							
4	1	26717-080002	NUT 8	1							

Fig.15. LABELS

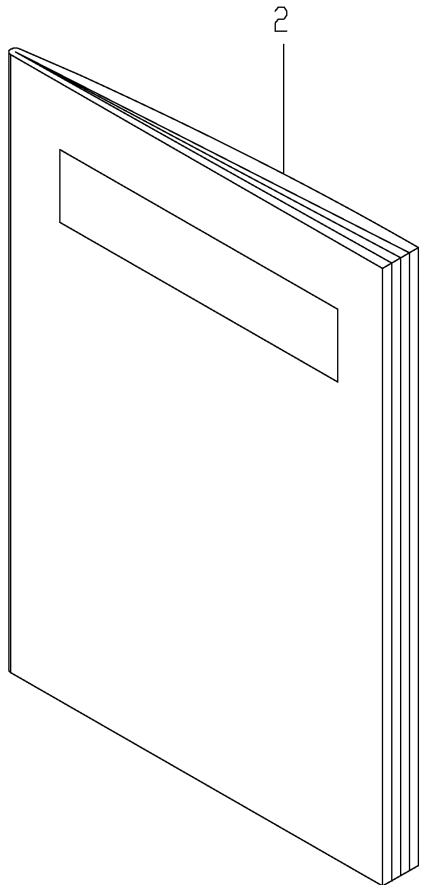
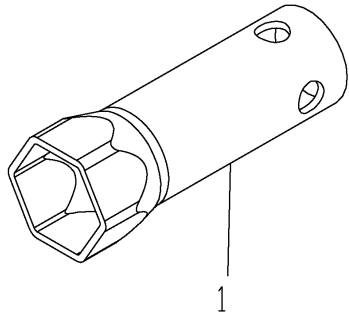


(A)=QT30PQ
(B)=
(C)=

(D)=
(E)=
(F)=

REF.	LEV.	PARTS NO.	DESCRIPTION	QTY						I	R
				(A)	(B)	(C)	(D)	(E)	(F)		
1	1	1A2700-86010	LABEL(QT30	1							
2	1	1A2700-86020	LABEL(MAIN CLUTCH	1							
3	1	1A2700-86070	LABEL(YANMAR 124	1							
4	1	1A2700-86080	LABEL(RECOIL	1							
5	1	1A2700-86050	LABEL(CAUTION	1							
6	1	1A2700-86060	LABEL(HIGH TEMP	1							
7	1	1A2179-86210	LABEL, 93DB	1							

Fig.16. TOOLS



0CNP4-G98100 16. TOOLS

(A)=QT30PQ

(B)=

(C)=

(D)=

(E)=

(F)=

REF.	LEV.	PARTS NO.	DESCRIPTION	QTY						I	R	
				(A)	(B)	(C)	(D)	(E)	(F)			
1	1	1A2700-87000	PLUG WRENCH	1								
2	1	1A2700-88000	MANUAL	1								

N:Old $\begin{matrix} \leftarrow \text{Yes} \\ \text{No} \rightarrow \end{matrix}$ New, Q:Old $\begin{matrix} \text{No} \\ \leftarrow \\ \text{Yes} \rightarrow \end{matrix}$ New, R:Old $\begin{matrix} \text{Yes} \\ \leftarrow \\ \text{Yes} \rightarrow \end{matrix}$ New, S:Old $\begin{matrix} \text{No} \\ \leftarrow \\ \text{No} \rightarrow \end{matrix}$ New, W:Add, Z:Discontinued, F:Interchangeable by set, K:Q'ty Change
 (C)Copy Rights YANMAR CO.,LTD.

Part Number Index

All parts are stipulated in the order of part numbers.

(Depending on the area in which the part is used.)

This index will display the location of the part according to each part number.

MODEL : QT30PQ
 PC NO : 0CNP4-G98100

PARTS No. INDEX

PARTS No.	Fig.	Ref.No.
1A1270-28160	5	8
1A1540-46010	7	9
		21
	13	1
1A1540-62100	11	3 B
1A1540-62110	11	2
1A1750-40800	14	1
1A1750-90150	8	8
	12	7
1A2179-86210	15	7
1A2190-35200	7	4
		16
1A2191-55581	9	8
1A2311-55100	8	6
	12	1
1A2490-51850	8	3
1A2700-11100	1	1
1A2700-11101	1	1 -1
1A2700-11200	1	2
1A2700-11201	1	2 -1
1A2700-12000	2	1
1A2700-12110	2	2
1A2700-13000	3	1
1A2700-13500	4	1
1A2700-13600	4	2
1A2700-13610	4	3
1A2700-13701	4	5
1A2700-13750	2	3
	3	2
1A2700-21000	5	1
1A2700-21700	5	7
1A2700-24050	5	2
1A2700-32000	6	1
1A2700-32100	6	3
1A2700-32110	6	4
1A2700-34000	7	1
1A2700-34100	7	13
1A2700-35000	7	2
		14
1A2700-35100	7	3
		15
1A2700-35200	7	5
		17
1A2700-35300	7	6
		18
1A2700-35500	7	7
		19
1A2700-35510	7	8
		20
1A2700-51500	8	1

PARTS No.	Fig.	Ref.No.
1A2700-51700	8	2
1A2700-51850	8	4
1A2700-52000	8	5
1A2700-55100	9	2
1A2700-55200	9	3
1A2700-55201	9	3 -1
1A2700-55210	9	4
1A2700-55211	9	4 -1
1A2700-55220	9	5
1A2700-55500	9	6
1A2700-55550	9	7
1A2700-55600	8	7
1A2700-55601	8	7 -1
1A2700-55650	9	9
1A2700-55700	9	10
1A2700-62000	10	1
1A2700-62100	10	2
1A2700-63000	11	4
1A2700-63200	11	6
1A2700-63210	11	7
1A2700-63300	11	3
1A2700-63310	11	3 C
1A2700-63320	11	3 D
1A2700-64000	12	2
1A2700-64001	12	2 -1
1A2700-64010	12	3
1A2700-64011	12	3 -1
1A2700-64101	12	4
1A2700-64200	12	5
1A2700-64201	12	5 -1
1A2700-64210	12	10
1A2700-64300	12	6
1A2700-64301	12	6 -1
1A2700-70000	13	2
1A2700-83001	14	2
1A2700-83050	14	3
1A2700-86010	15	1
1A2700-86020	15	2
1A2700-86050	15	5
1A2700-86060	15	6
1A2700-86070	15	3
1A2700-86080	15	4
1A2700-87000	16	1
1A2700-88000	16	2
1C6020-73090	12	11
1D2040-41130	11	3 A
1D2042-41200	11	1
1E6102-84970	9	1

PARTS No.	Fig.	Ref.No.
-----------	------	---------

PARTS No.	Fig.	Ref.No.
-----------	------	---------



YANMAR CO., LTD.